

APP CRS  
**181°**

Rwy Idg  
TDZE  
**534**

Apt Elev  
**537**

RNAV (GPS) RWY 18

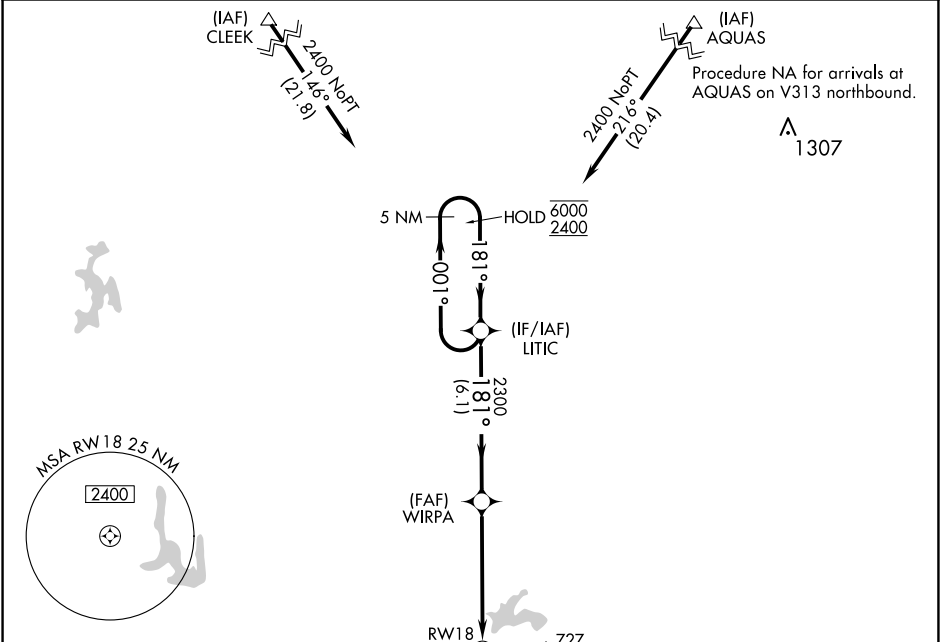
VANDALIA MUNI (VLA)

RNP APCH - GPS.

Rwy 18 helicopter visibility reduction below ¾ SM NA. When local altimeter setting not received, use Salem altimeter setting; increase all MDAs 60 feet and visibility Cats C and D ¼ SM.

MISSED APPROACH: Climb to 2400 direct SEYRO and hold.

AWOS-AV <b>122.8</b>	KANSAS CITY CENTER <b>124.3 269.15</b>	UNICOM <b>122.8 (CTAF) 0</b>
-------------------------	---	---------------------------------



ELEV 537

TDZE 534

REIL Rws 18, 27 and 36 0

MIRL Rws 9-27 and 18-36 0

2400

SEYRO

VGSI and descent angles not coincident (VGSI Angle 3.00/TCH 20).

5 NM Holding Pattern

CATEGORY	A	B	C	D
LNAV MDA	1060-1	526 (600-1)	1060-1½	526 (600-1½)
CIRCLING	1060-1	523 (600-1)	1060-1½	1220-2¼
			523 (600-1½)	683 (700-2¼)

EC-3, 07 AUG 2025 to 04 SEP 2025

EC-3, 07 AUG 2025 to 04 SEP 2025