

DALLAS, TEXAS

AL-742 (FAA)

24305

VOR/DME CVE 116.2 Chan 109	APP CRS 165°	Rwy Idg 3800 TDZE 658 Apt Elev 661
--	------------------------	---

APP CRS
165°

Rwy Idg	3800
TDZE	658
Apt Elev	661

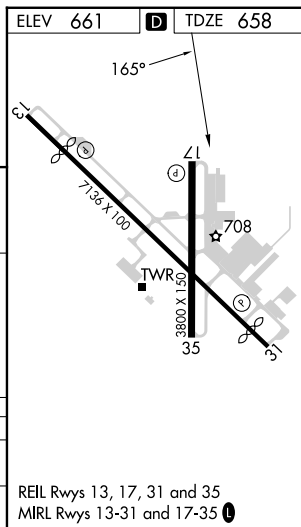
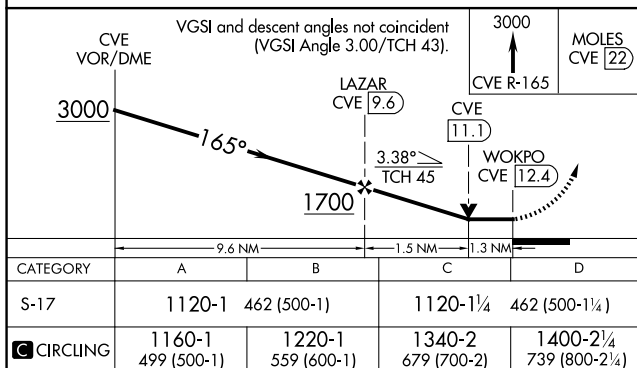
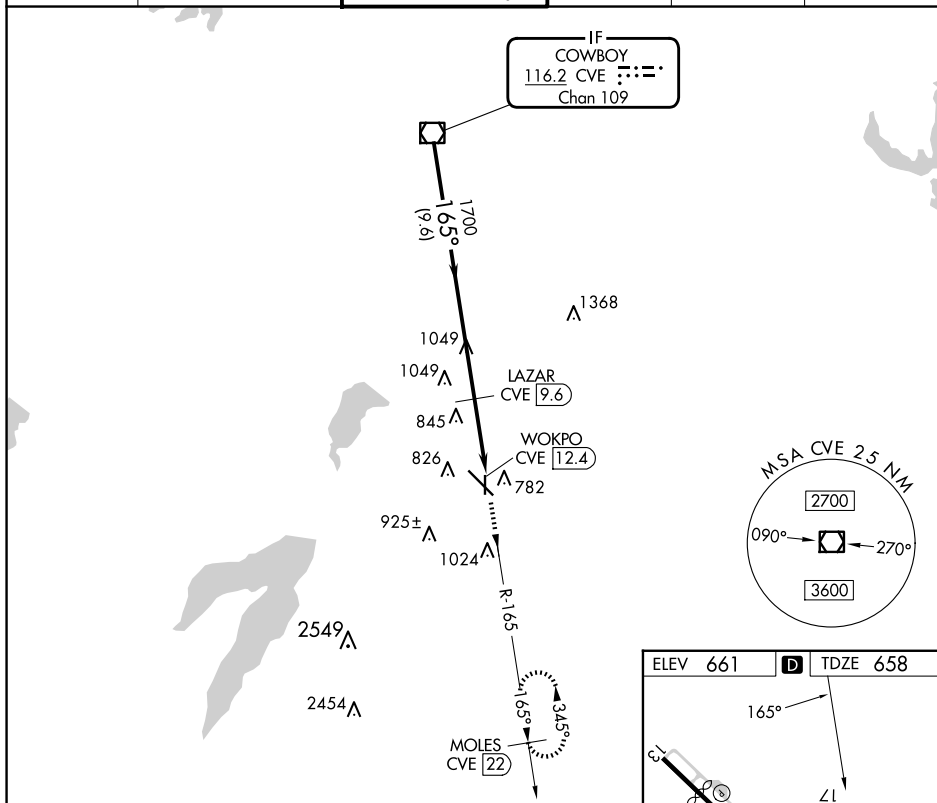
VOR RWY 17
DALLAS EXEC (RBD)

DME required. RADAR required for procedure entry.

T Rwy 17 helicopter visibility reduction below $\frac{3}{4}$ SM NA.

MISSED APPROACH: Climb to 3000 on CVE
VOR/DME R-165 to MOLES/22 DME and hold.

ATIS 126.35	LONE STAR APP CON 125.2 343.65	EXECUTIVE TOWER ★ 127.25 (CTAF) 0	GND CON 119,475	CLNC DEL 118,625	UNICOM 122.95
----------------	-----------------------------------	--------------------------------------	--------------------	---------------------	------------------



DALLAS, TEXAS
Amdt 1B 03DEC20

32°41'N-96°52'W

DALLAS EXEC (RBD)
VOR RWY 17

SC-2, 07 AUG 2025 to 04 SEP 2025