


DALLAS, TEXAS

AL-742 (FAA)

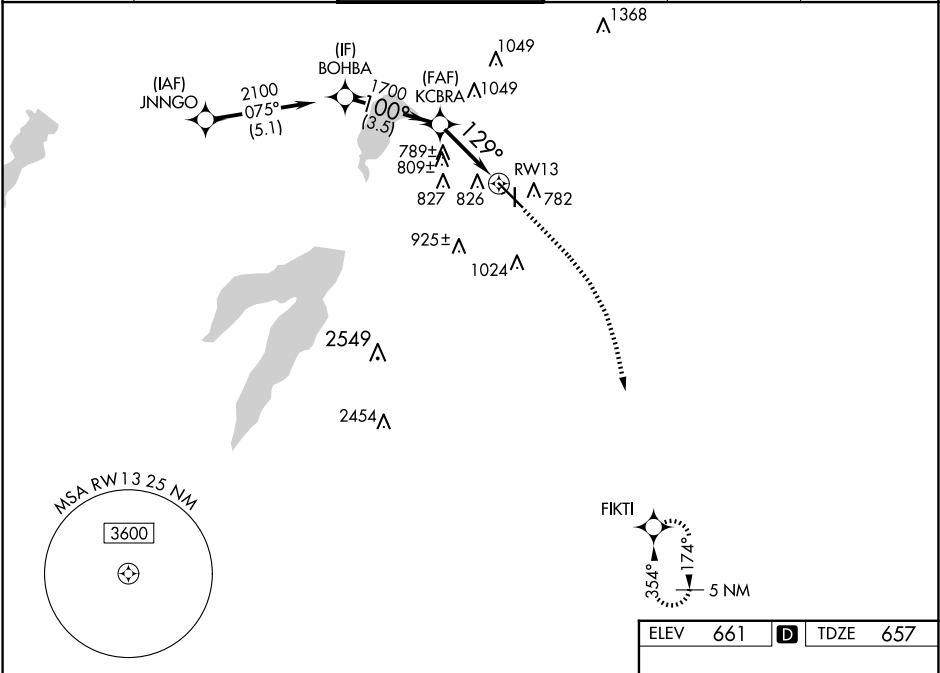
25163

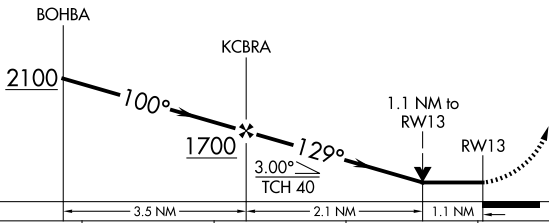

WAAS CH 78444 W13A	APP CRS 129°	Rwy Ldg TDZE 657 Apt Elev 661
--	------------------------	---

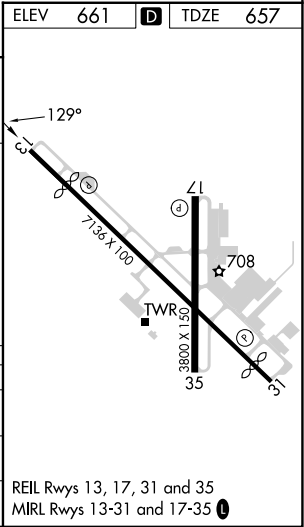
RNAV (GPS) Y RWY 13
DALLAS EXEC (RBD)

RNP APCH - GPS.		MISSED APPROACH: Climb to 1200 then climbing right turn to 3000 direct FIKTI and hold.
	Rwy 13 helicopter visibility reduction below 3/4 SM NA.	

ATIS 126.35	LONE STAR APP CON 125.2 343.65	EXECUTIVE TOWER★ 127.25 (CTAF) 0	GND CON 119.475	CLNC DEL 118.625	UNICOM 122.95
-----------------------	--	--	---------------------------	----------------------------	-------------------------



<div><div>1200</div><div>3000</div><div>FIKTI</div></div>				
				
CATEGORY	A	B	C	D
LP MDA	1040-1	383 (400-1)	1040-1 1/8	383 (400-1 1/8)
LNAV MDA	1060-1	403 (400-1)	1060-1 1/8	403 (400-1 1/8)
 CIRCLING	1160-1 499 (500-1)	1220-1 559 (600-1)	1340-2 679 (700-2)	1400-2 1/4 739 (800-2 1/4)



DALLAS, TEXAS
Amdt 1 12JUN25

32°41'N-96°52'W

DALLAS EXEC (RBD)
RNAV (GPS) Y RWY 13

SC-2, 07 AUG 2025 to 04 SEP 2025

SC-2, 07 AUG 2025 to 04 SEP 2025