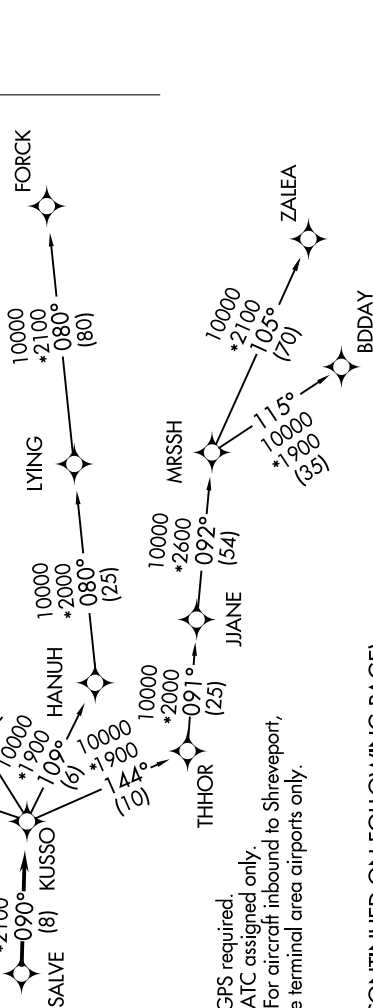
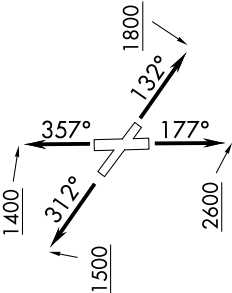


SC-2, 07 AUG 2025 to 04 SEP 2025

LONE STAR DEP CON
125.2 343.65
ATIS
126.35
CINC DEL
118.625
GND CON
119.475
EXECUTIVE TOWER *
127.25 (CTAF)

TOP ALTITUDE:
ASSIGNED BY ATC

TAKEOFF MINIMUMS
Rwys 13, 31, 35: Standard.
Rwy 17: 400-2¾ or standard with a minimum
climb of 220' per NM to 1200.



NOTE: RADAR required.
NOTE: RNAV 1.
NOTE: DME/DME/IRU or GPS required.
NOTE: BDDAY Transition: ATC assigned only.
NOTE: MRSSH Transition: For aircraft inbound to Shreveport,
Jackson and Monroe terminal area airports only.

(CONTINUED ON FOLLOWING PAGE)

SC-2, 07 AUG 2025 to 04 SEP 2025