

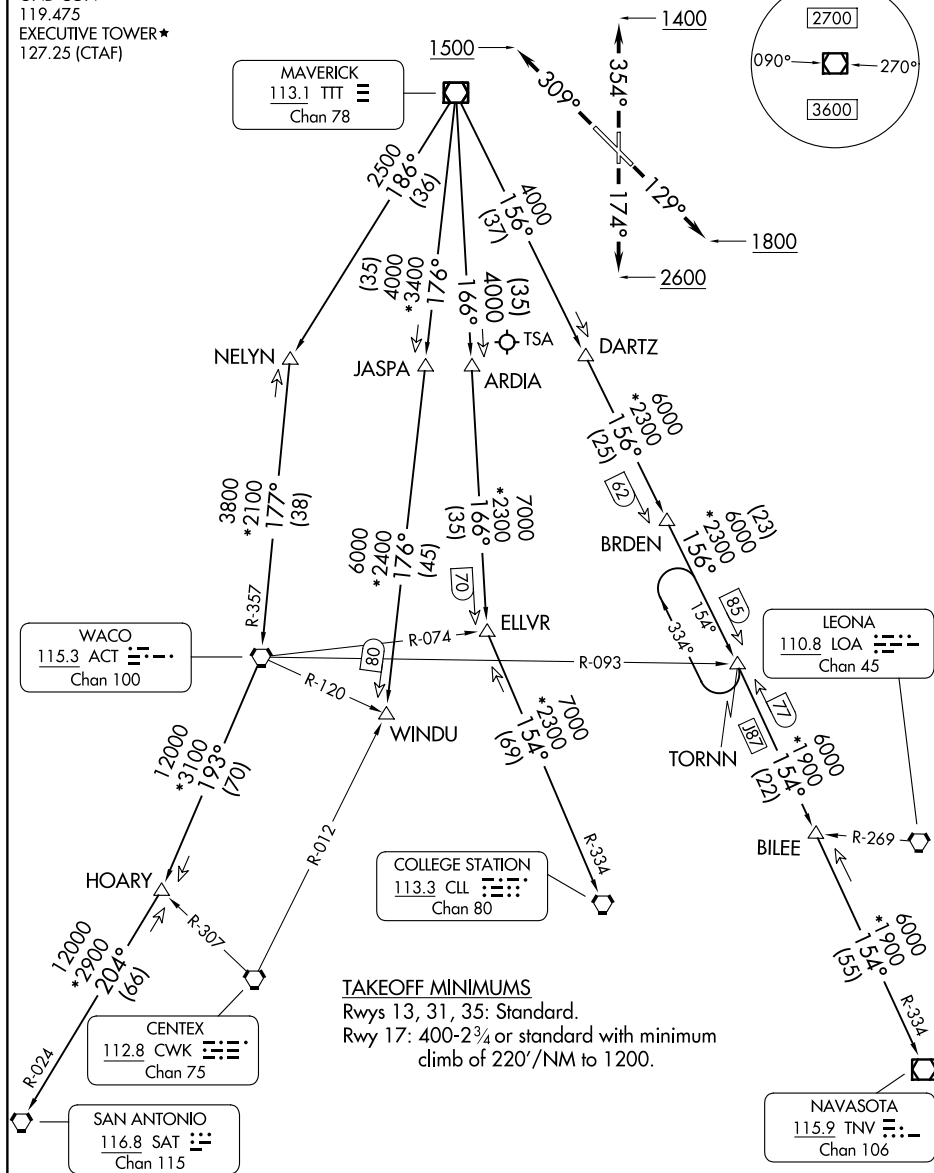
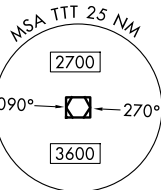
DALLAS EXEC (RBD)
DALLAS, TEXAS

JOE POOL EIGHT DEPARTURE

LONE STAR DEP CON
125.2 343.65
ATIS
126.35
CLNC DEL
118.625
GND CON
119.475
EXECUTIVE TOWER★
127.25 (CTAF)

RADAR and DME required.

**TOP ALTITUDE:
ASSIGNED BY ATC**



TAKEOFF MINIMUMS

Rwys 13, 31, 35: Standard.

Rwy 17: 400-2¾ or standard with minimum climb of 220'/NM to 1200.

NOTE: Chart not to scale.

JOE POOL EIGHT DEPARTURE

(JPOOL8.TTT) 07AUG25

DALLAS, TEXAS
DALLAS EXEC (RBD)

SC-2, 07 AUG 2025 to 04 SEP 2025