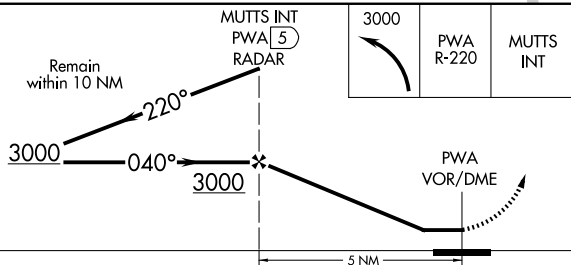
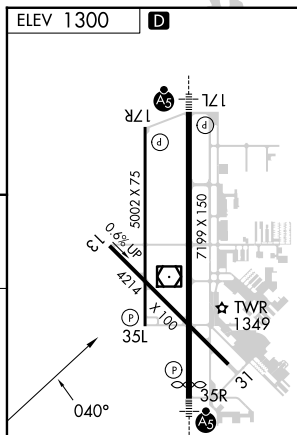
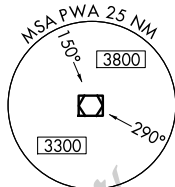
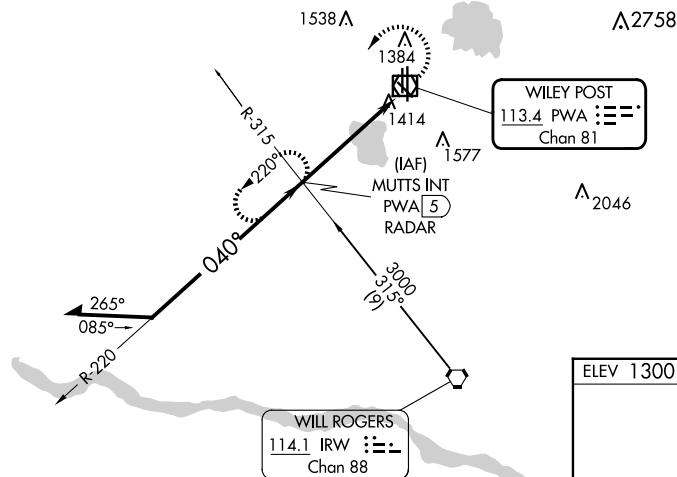


24361

VOR-A
WILEY POST (PWA)

MISSED APPROACH: Climbing left turn to 3000 via PWA VOR/DME R-220 to MUTTS Int and hold.



REIL Rwys 17R and 35L **L**
HIRL Rwy 17L-35R **L**
MIRL Rwys 13-31 and 17R-35L **L**

WILEY POST (PWA)
VOR-A

SC-1, 07 AUG 2025 to 04 SEP 2025