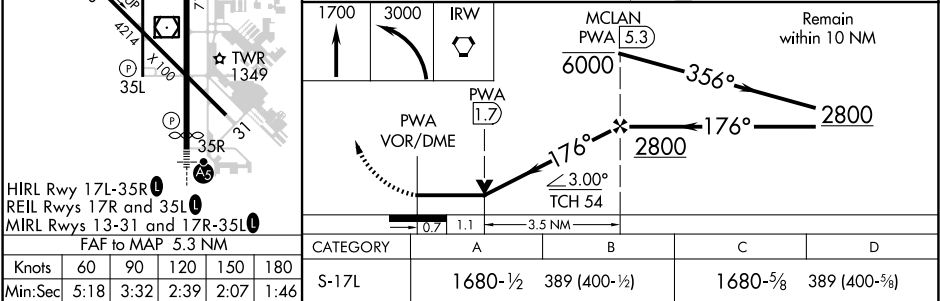
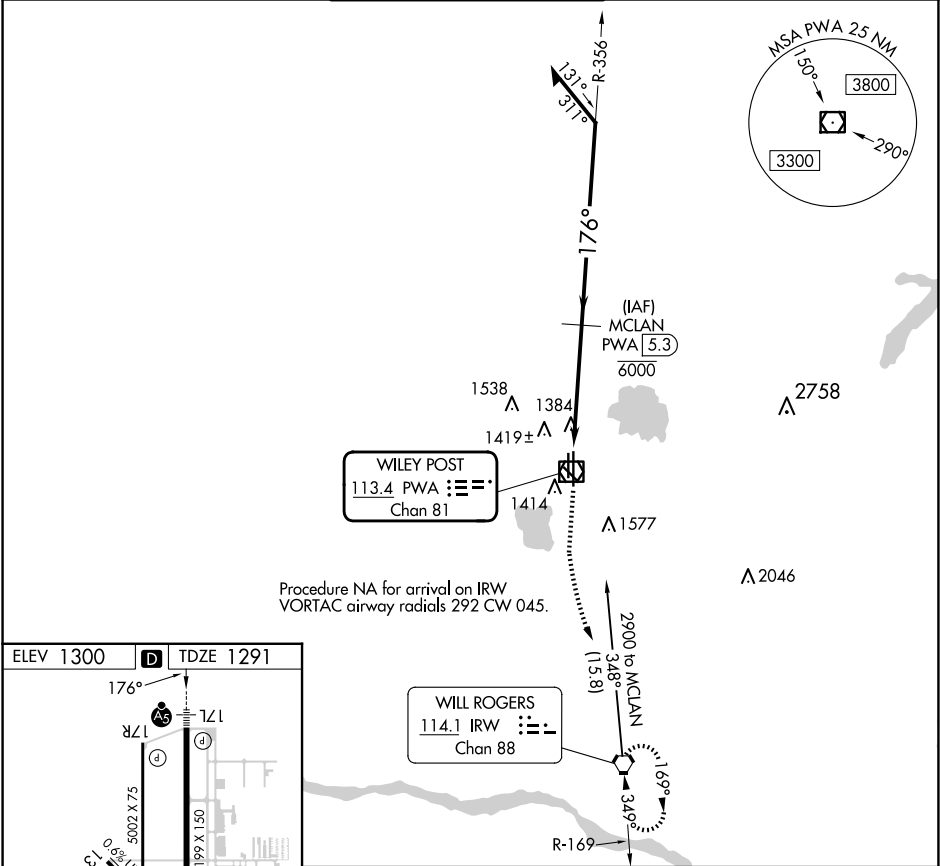


VOR/DME PWA 113.4 Chan 81	APP CRS 176°	Rwy Idg TDZE Apt Elev 6844 1291 1300	VOR RWY 17L WILEY POST (PWA)
---	------------------------	---	---------------------------------

DME required.	MALSR	MISSED APPROACH: Climb to 1700 then climbing left turn to 3000 direct IRW VORTAC and hold.
ASR		

ATIS 128.725	OKE CITY APP CON 124.6 266.8	WILEY POST TOWER★ 126.9(CTAF) 306.9	GND CON 121.7	UNICOM 122.95
------------------------	--	---	-------------------------	-------------------------



SC-1, 07 AUG 2025 to 04 SEP 2025

SC-1, 07 AUG 2025 to 04 SEP 2025