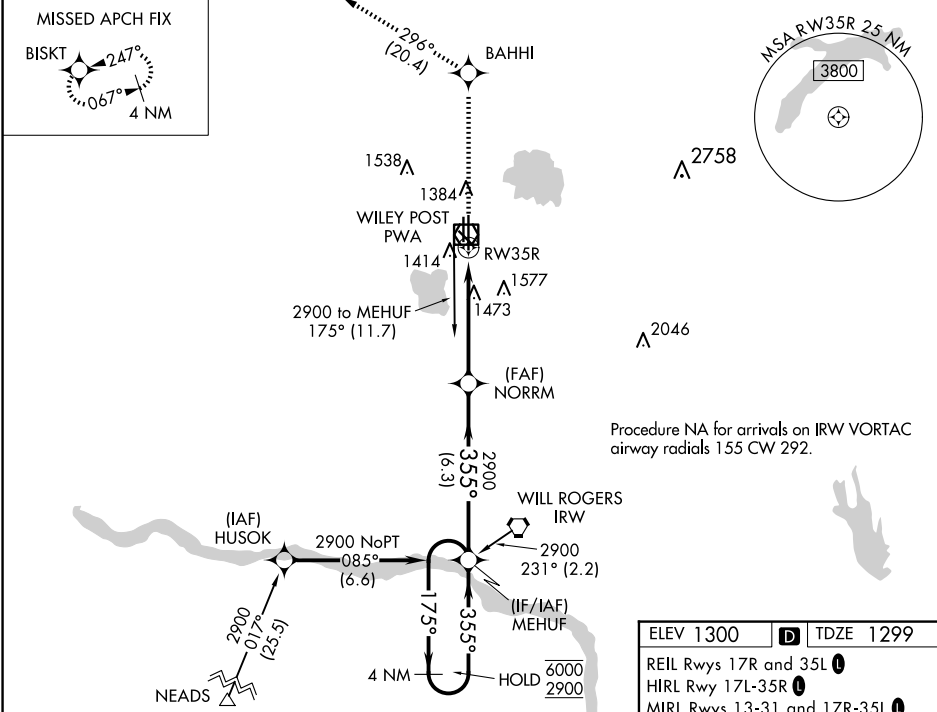


WAAS CH 42716 W35A	APP CRS 355°	Rwy Idg TDZE 1299 Apt Elev 1300
--	------------------------	---

RNAV (GPS) RWY 35R
WILEY POST (PWA)

RNP APCH-GPS. For uncompensated Baro-VNAV systems, LNAV/VNAV NA below -13°C or above 54°C. ASR		MALSR	MISSED APPROACH: Climb to 3100 direct BAHHI and on track 296° to BISKT and hold.	
ATIS 128.725	OKE CITY APP CON 124.6 266.8	WILEY POST TOWER ★ 126.9 (CTAF) 306.9	GND CON 121.7	UNICOM 122.95



VGSI and RNAV glidepath not coincident (VGSI Angle 3.00/TCH 54). 4 NM Holding Pattern MEHUF NORRM				
3100 BAHHI tr 296° BISKT				
6000 ← 175° 2900 355° → 355° 2900 1.2 NM to RW35R RW35R				
GP 3.00° TCH 50 6.3 NM 3.7 NM 1.2				
CATEGORY	A	B	C	D
LPV DA	1499-1/2 200 (200-1/2)			
LNAV/VNAV DA	1755-7/8 456 (500-7/8)			
LNAV MDA	1740-1/2 441 (500-1/2)		1740-7/8 441 (500-7/8)	
CIRCLING	1780-1 480 (500-1)		1880-1 580 (600-1)	
			1880-2 580 (600-2)	

