

OKLAHOMA CITY, OKLAHOMA

AL-739 (FAA)

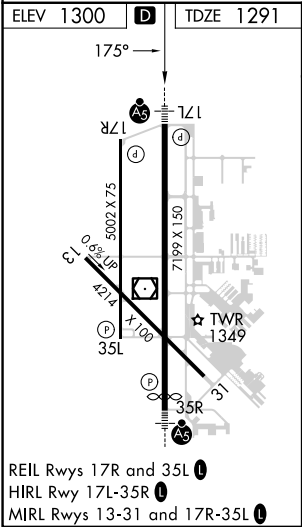
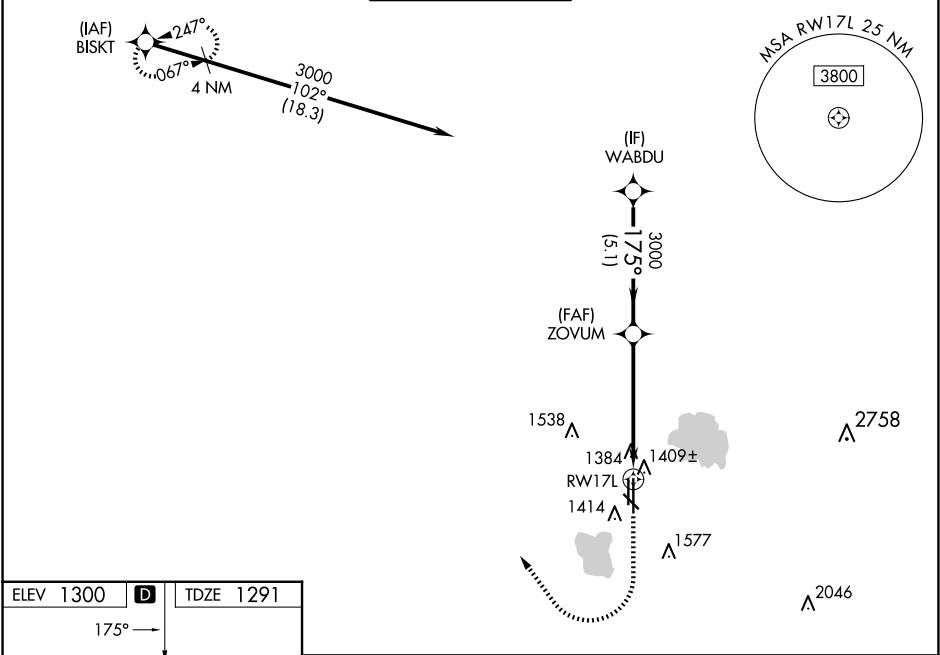
24361

WAAS CH 72737 W17A	APP CRS 175°	Rwy Idg TDZE 1291 Apt Elev 1300
--	------------------------	---

RNAV (GPS) RWY 17L

WILEY POST (PWA)

RNP APCH-GPS.		<div>MALSR</div> <div></div>	MISSED APPROACH: Climb to 1700 then climbing right turn to 3400 direct BISKT and hold.	
<div></div> <div></div> ASR	For uncompensated Baro-VNAV systems, LNAV/VNAV NA below -13°C or above 54°C. For inop ALS, increase LNAV/VNAV all Cats visibility to ¾ SM and LNAV Cat C/D visibility to 1 SM.			
ATIS 128.725	OKE CITY APP CON 124.6 266.8	WILEY POST TOWER ★ 126.9 (CTAF) 0 306.9	GND CON 121.7	UNICOM 122.95



<div>1700</div> <div>3400</div> <div>BISKT</div>		<div>ZOYUM</div> <div>3000</div>		<div>WABDU</div> <div>3000</div>
<div>1 NM to RWY 17L</div>		<div>175°</div> <div>3000</div>		<div>GP 3.00°</div> <div>TCH 54</div>
<div>1 NM</div> <div>4.2 NM</div> <div>5.1 NM</div>				
CATEGORY	A	B	C	D
LPV DA	1491-½		200 (200-½)	
LNAV/VNAV DA	1590-½		299 (300-½)	
LNAV MDA	1660-½ 369 (400-½)		1660-⅝ 369 (400-⅝)	
CIRCLING	1780-1 480 (500-1)		1880-1½ 580 (600-1½)	
			1880-2 580 (600-2)	

OKLAHOMA CITY, OKLAHOMA
Amdt 2B 19MAY22

35°32'N-97°39'W

WILEY POST (PWA)

RNAV (GPS) RWY 17L

SC-1, 07 AUG 2025 to 04 SEP 2025

SC-1, 07 AUG 2025 to 04 SEP 2025