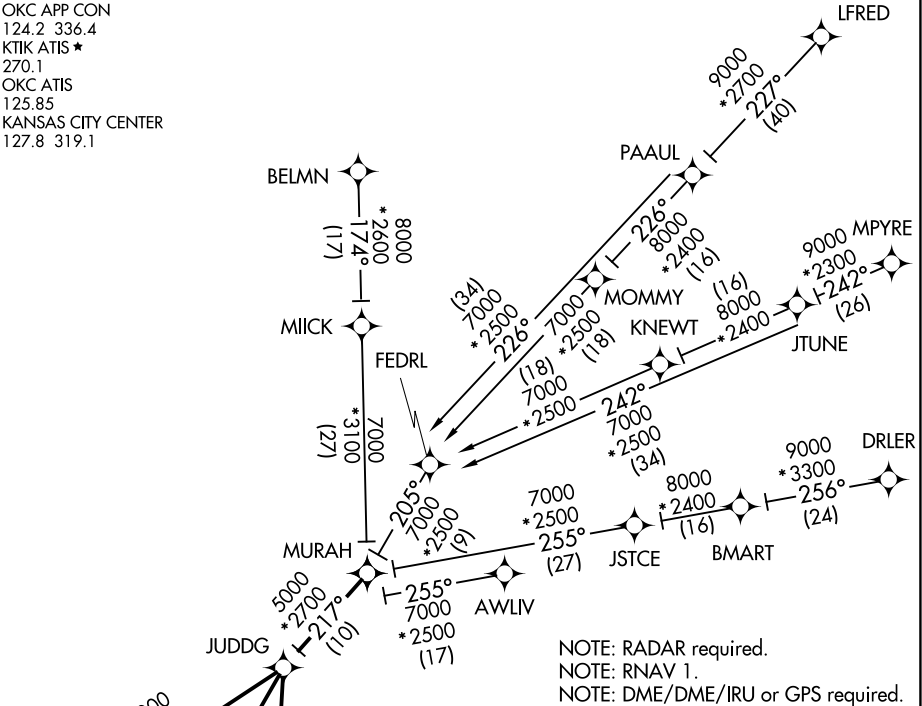


OKC APP CON  
124.2 336.4  
KTIK ATIS ★  
270.1  
OKC ATIS  
125.85  
KANSAS CITY CENTER  
127.8 319.1



ARRIVAL ROUTE DESCRIPTION

- AWLIV TRANSITION (AWLIV.JUDDG2)
- BELMN TRANSITION (BELMN.JUDDG2): (For non-GPS equipped aircraft, IFI DME must be operational).
- BMART TRANSITION (BMART.JUDDG2)
- DRLER TRANSITION (DRLER.JUDDG2)
- JTUNE TRANSITION (JTUNE.JUDDG2)
- LFRED TRANSITION (LFRED.JUDDG2)
- MPYRE TRANSITION (MPYRE.JUDDG2)
- PAAUL TRANSITION (PAAUL.JUDDG2)

From MURAH on track 217° to JUDDG.

**LANDING OUN/TIK:** From JUDDG on track 192° to PEGOE, then on track 192°. Expect radar vectors to final approach course.

**LANDING PWA RWY 17L:** From JUDDG on track 236° to ODPIE, then on track 236°. Expect radar vectors to final approach course.

**LANDING PWA RWY 35R:** From JUDDG on track 225° to QUOIT, then on track 225°. Expect radar vectors to final approach course.

NOTE: Chart not to scale.