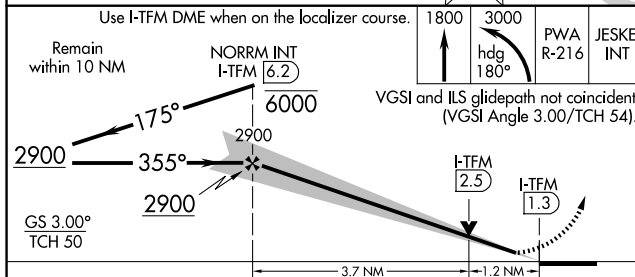
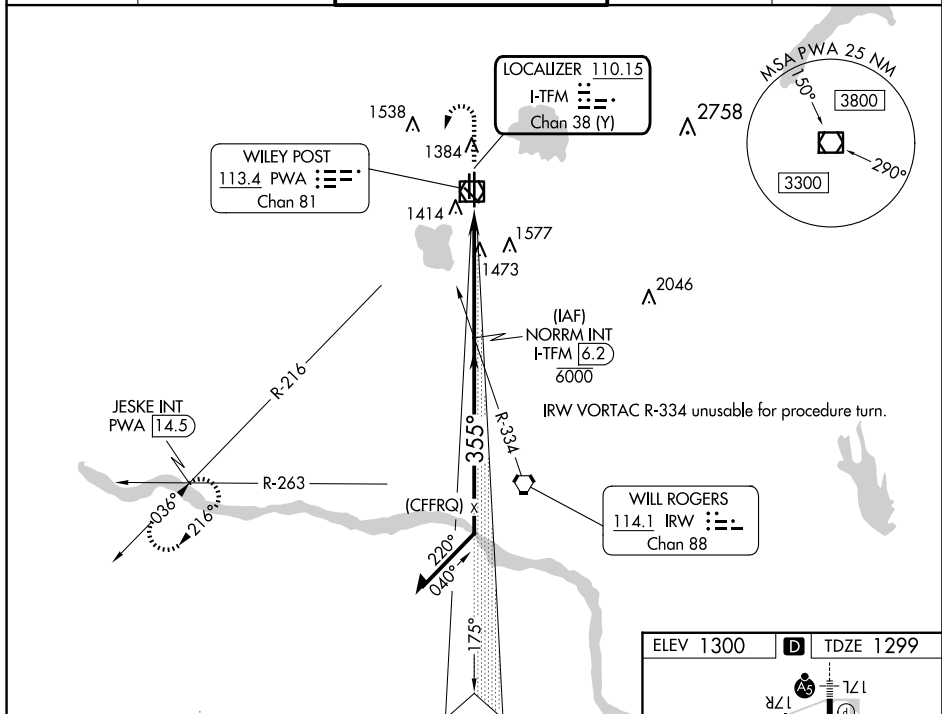


ILS or LOC RWY 35R
WILEY POST (PWA)

MALSR

MISSED APPROACH: Climb to 1800 then climbing left turn to 3000 on heading 180° and PWA VOR/DME R-216 to JESKE INT/PWA 14.5 DME and hold.

ATIS 128.725	OKE CITY APP CON 124.6 266.8	WILEY POST TOWER ★ 126.9 (CTAF) 0 306.9	GND CON 121.7	UNICOM 122.95
------------------------	--	---	-------------------------	-------------------------



CATEGORY	A	B	C	D
S-ILS 35R	1499-1/2 200 (200-1/2)			
S-LOC 35R	1740-1/2	441 (500-1/2)	1740-7/8	441 (500-7/8)
C CIRCLING	1780-1	480 (500-1)	1880-1 1/2 580 (600-1 1/2)	1880-2 580 (600-2)

