

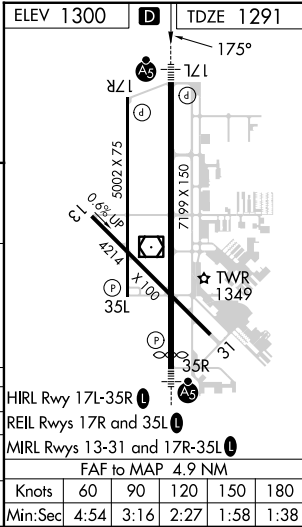
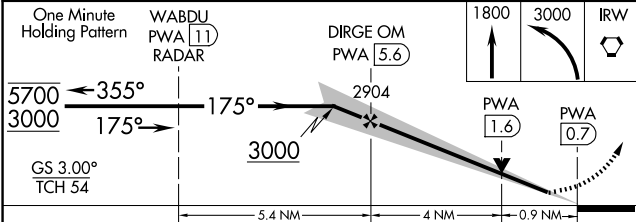
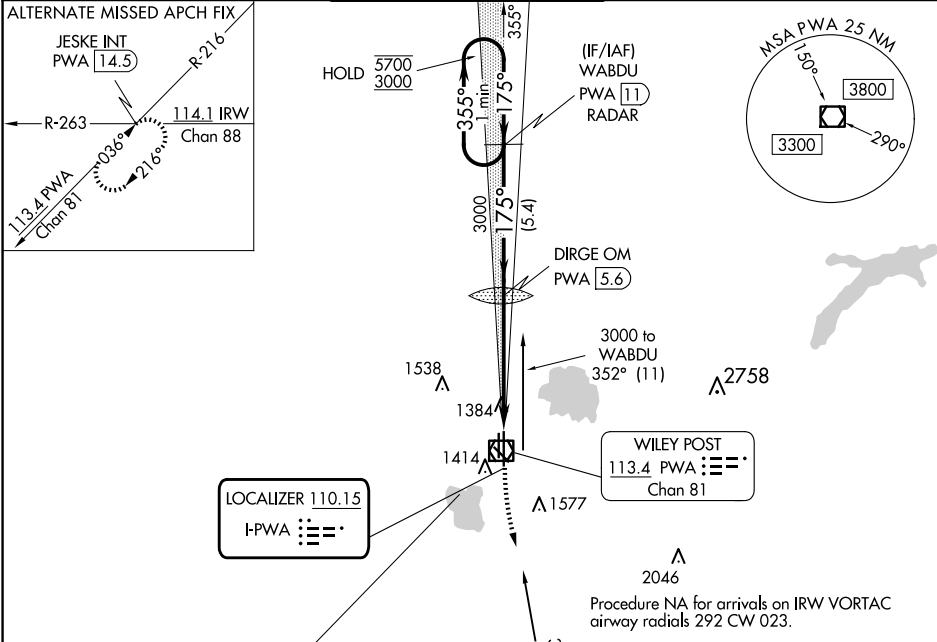
LOC I-PWA	APP CRS	Rwy Idg	6844
110.15	175°	TDZE	1291
		Apt Elev	1300

ILS or LOC RWY 17L
WILEY POST (PWA)

DME or RADAR required.

 ASR	MALSR 	MISSED APPROACH: Climb to 1800 then climbing left turn to 3000 direct IRW VORTAC and hold.
--	--	--

ATIS 128.725	OKE CITY APP CON 124.6 266.8	WILEY POST TOWER ★ 126.9 (CTAF) 0 306.9	GND CON 121.7	UNICOM 122.95
-----------------	---------------------------------	--	------------------	------------------



CATEGORY	A	B	C	D
S-ILS 17L		1491-1/2	200 (200-1/2)	
S-LOC 17L	1640-1/2	349 (400-1/2)	1640-5/8	349 (400-5/8)
CIRCLING	1780-1	480 (500-1)	1880-1 1/2 580 (600-1 1/2)	1880-2 580 (600-2)

SC-1, 07 AUG 2025 to 04 SEP 2025

SC-1, 07 AUG 2025 to 04 SEP 2025