

TACAN RWY 25

TACAN LRF Chan <b>29</b>	APCH CRS <b>259°</b>	Rwy ldg TDZE Arprt Elev <b>12,001</b> <b>301</b> <b>312</b>
-----------------------------	-------------------------	---

[USAF]

LITTLE ROCK AFB (KLRF)

**⚠**

\* When ALS inop, increase CAT AB RVR to 55, vis to 1 mile; CAT CDE vis to 1½ miles.  
\*\* Circling not authorized S of Rwy 07-25.

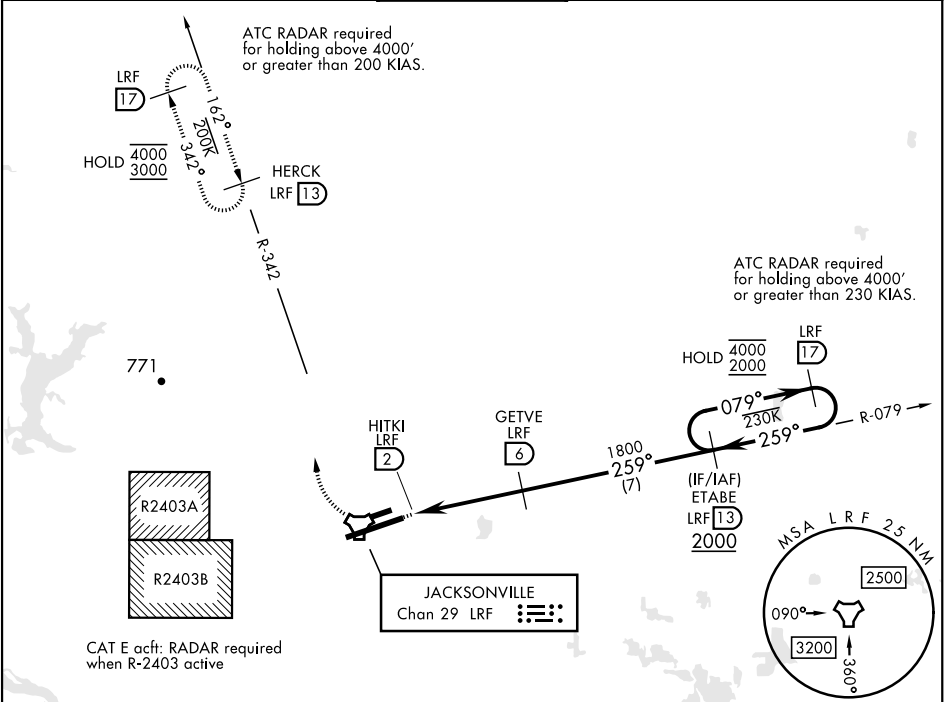
ALS-F-2

**A**

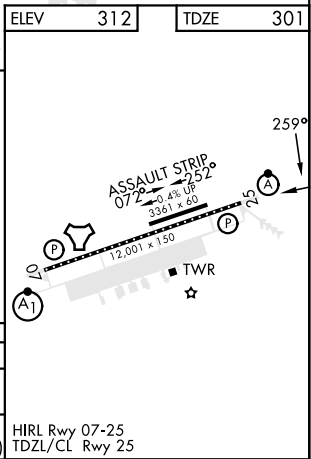
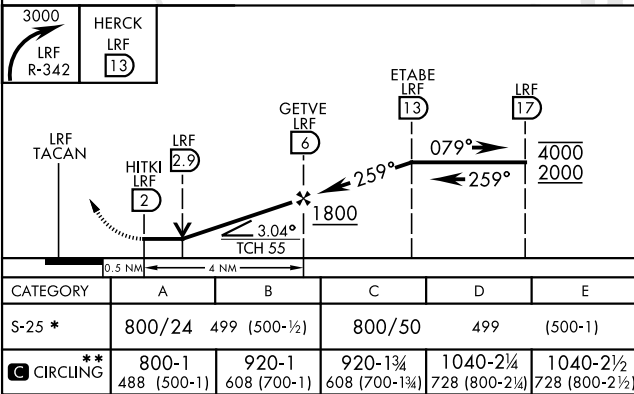
MISSED APPROACH: Climbing right turn to 3000 to intercept LRF R-342 outbound to HERCK and hold as published.

ALTERNATE MISSED APPROACH: Climbing to 3000, fly runway heading until LRF 2 DME, then turn right heading 360°, EFC from ATC.

ATIS ★ <b>119.175 251.1</b>	APP CON <b>119.5 306.2</b>	TOWER <b>120.6 269.075</b>	GND CON <b>132.8 275.8</b>	CLNC DEL ★ <b>253.5</b>
--------------------------------	-------------------------------	-------------------------------	-------------------------------	----------------------------



EMERG SAFE ALT 100 NM 4000



TACAN RWY 25

SC-1, 07 AUG 2025 to 04 SEP 2025

SC-1, 07 AUG 2025 to 04 SEP 2025