

JACKSONVILLE, ARKANSAS

RNAV (GPS) RWY 25

WAAS CH 67565 W25A	APCH CRS 252°	Rwy ldg TDZE Arpt Elev	12,001 301 312
--------------------------	------------------	------------------------------	----------------------

(USAF)

LITTLE ROCK AFB (KLRF)

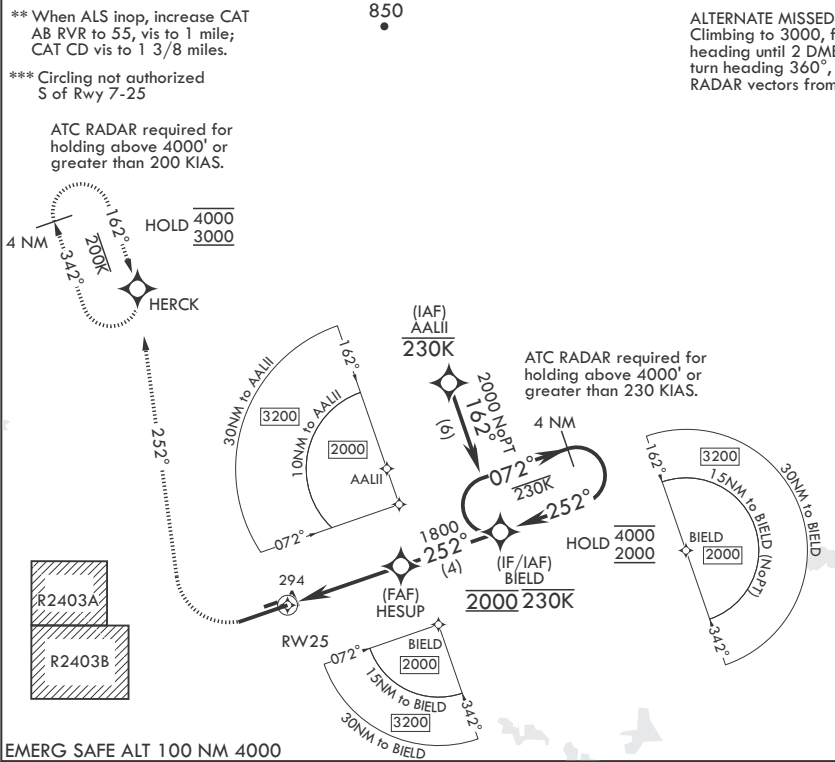
RNP APCH - GPS	ALSF-2	MISSED APPROACH: Climb to 900 then climbing right turn to 3000 direct HERCK and hold.	
RADAR required			
* When ALS inop, increase RVR to 40, vis to 3/4 mile. When TDZL/CL inop increase RVR to 24.			
ATIS* 119.175 251.1	APP CON/DEP CON 119.5 306.2	TOWER 120.6 269.075	GND CON 132.8 275.8
		CLNC DEL* 253.5	

** When ALS inop, increase CAT
AB RVR to 55, vis to 1 mile;
CAT CD vis to 1 3/8 miles.

*** Circling not authorized
S of Rwy 7-25

ATC RADAR required for
holding above 4000' or
greater than 200 KIAS.

ALTERNATE MISSED APPROACH:
Climbing to 3000, fly runway
heading until 2 DME then right
turn heading 360°, expect
RADAR vectors from ATC.



EMERG SAFE ALT 100 NM 4000

900

3000

HERCK

BIELD

4 NM

Holding Pattern

072°

4000

← 252°

2000

252°

1800

1.4 NM to RW25

4.6 NM

RW25

HESUP

GP 3.00°

TCH 56

ASSAULT STRIP

0.4% UP

3361 x 60

252°

294

252°

25

(A)

(P)

BCN

TWR

12,001 x 150

072°

CATEGORY	A	B	C	D
LPV DA*	501/18		200	(200-½)
LNAV MDA**	780/24	479 (500-½)	780/50	479 (500-1)
CIRCLING***	780-1 468 (500-1)	920-1 608 (700-1)	920-1¾ 608 (700-1¼)	1040-2¼ 728 (800-2¼)

HIRL Rwy 7-25

TDZL/CL Rwy 25

JACKSONVILLE, ARKANSAS

34°55'N - 92°09'W

LITTLE ROCK AFB (KLRF)

Orig 10AUG23

RNAV (GPS) RWY 25

SC-1, 07 AUG 2025 to 04 SEP 2025

SC-1, 07 AUG 2025 to 04 SEP 2025