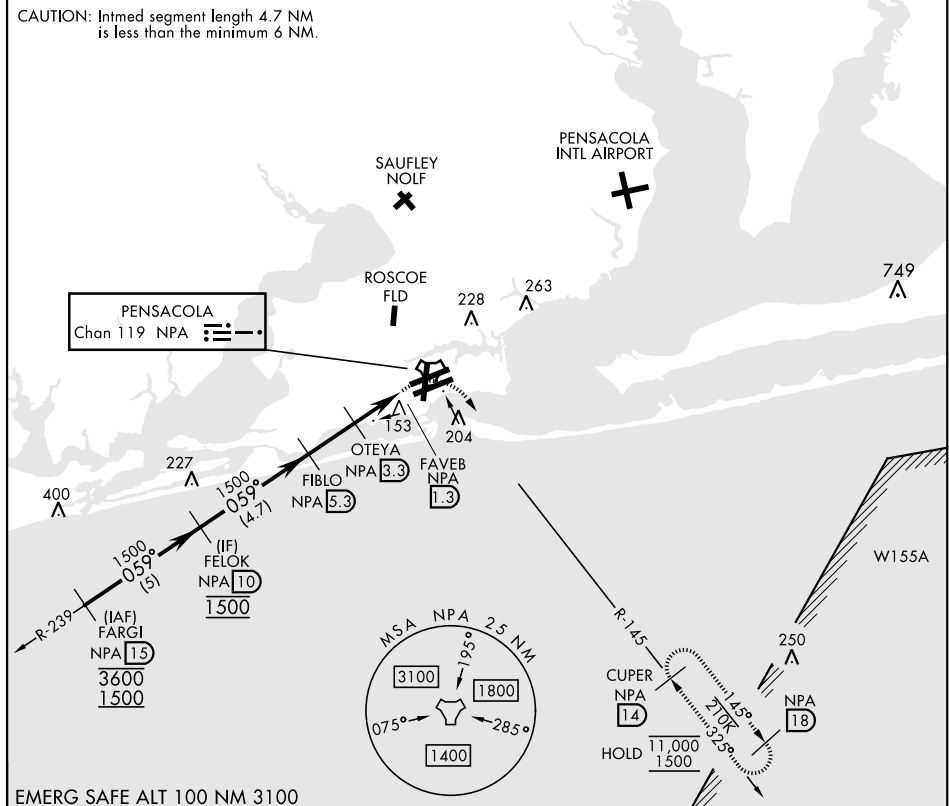


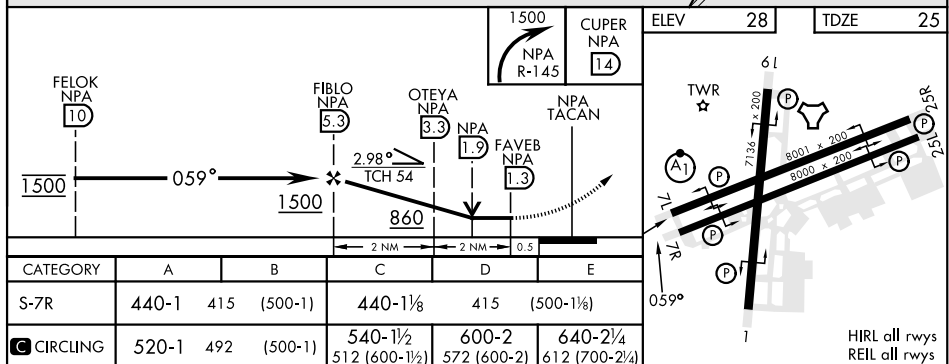
TACAN Y RWY 7R

TACAN NPA Chan <b>119</b>	APCH CRS <b>059°</b>	Rwy Idg <b>8000</b> TDZE <b>25</b> Arpt Elev <b>28</b>	[USN]	PENSACOLA NAS (FORREST SHERMAN FLD) (KNPA)			
RADAR required ▼			MISSED APPROACH: Climbing right turn to 1500 via NPA TACAN R-145 to CUPER and hold.				
ATIS <b>124.35 266.8</b>	APP CON <b>120.65 270.8</b>		SHERMAN TOWER <b>120.7 340.2</b>		GND CON <b>121.7 336.4</b>	CLNC DEL <b>134.1 268.7</b>	ASR/ PAR

CAUTION: Intmed segment length 4.7 NM  
is less than the minimum 6 NM



EMERG SAFE ALT 100 NM 3100



HIRL all rwys  
REIL all rwys