

TACAN Y RWY 7L

TACAN NPA Chan <b>119</b>	APCH CRS <b>064°</b>	Rwy Idg TDZE <b>23</b> Arpt Elev <b>28</b>
------------------------------	-------------------------	--

[USN] PENSACOLA NAS (FORREST SHERMAN FLD) (KNPA)

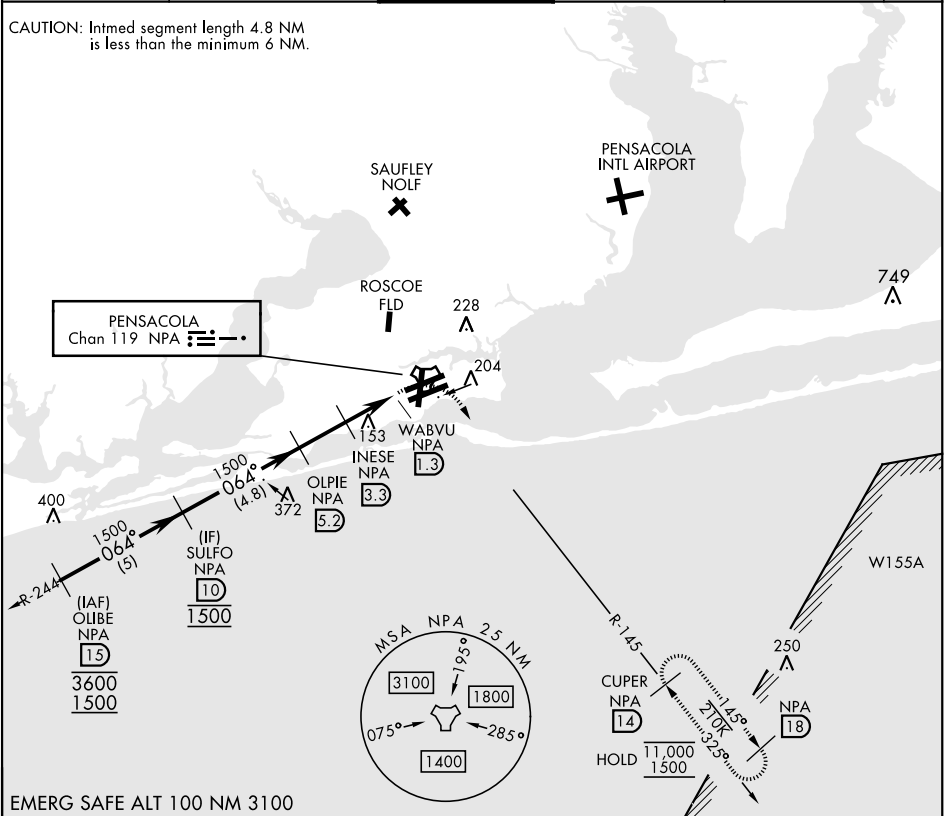
RADAR required  
\* When ALS inop, increase CAT AB vis to 1 mile,  
CAT CDE vis to 1 1/8 miles.



MISSED APPROACH: Climbing right turn to 1500 via NPA  
TACAN R-145 to CUPER and hold.

ATIS <b>124.35 266.8</b>	APP CON <b>120.65 270.8</b>	SHERMAN TOWER <b>120.7 340.2</b>	GND CON <b>121.7 336.4</b>	CLNC DEL <b>134.1 268.7</b>	ASR/ PAR
-----------------------------	--------------------------------	-------------------------------------	-------------------------------	--------------------------------	-------------

CAUTION: Intmd segment length 4.8 NM  
is less than the minimum 6 NM.



EMERG SAFE ALT 100 NM 3100

CATEGORY	A	B	C	D	E
S-7L *	440-½	417 (500-½)	440-¾	417 (500-¾)	
CIRCLING	520-1	492 (500-1)	540-1½ 512 (600-1½)	600-2 572 (600-2)	640-2¼ 612 (700-2¼)

HIRL all rwys  
REIL all rwys

TACAN Y RWY 7L

SE-3, 07 AUG 2025 to 04 SEP 2025

SE-3, 07 AUG 2025 to 04 SEP 2025