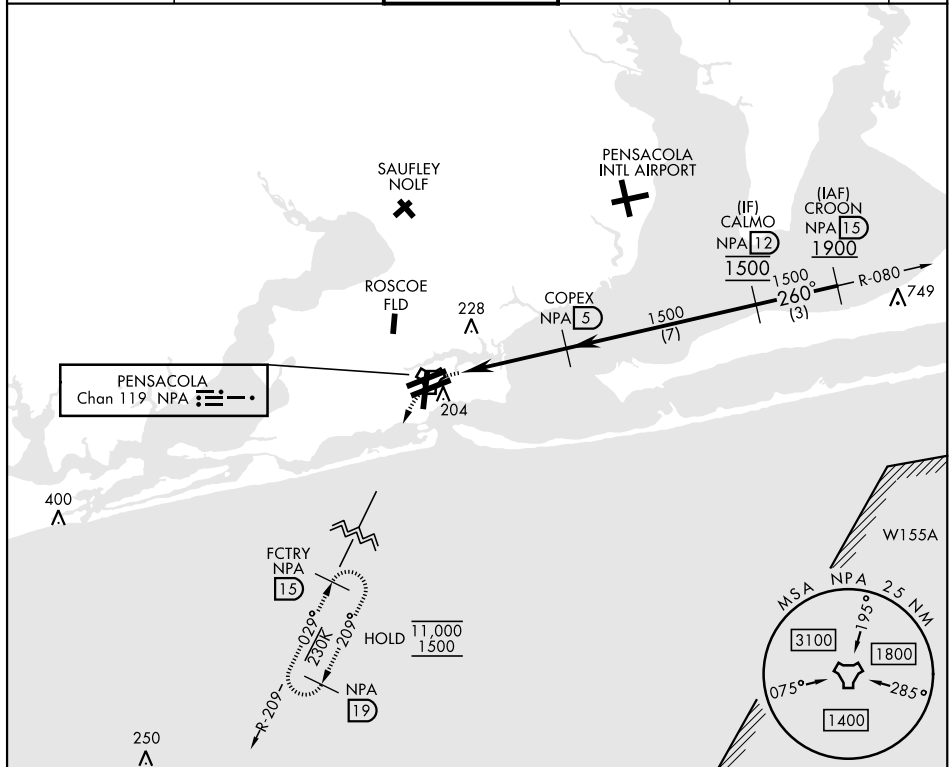


TACAN Y RWY 25R

TACAN NPA Chan <b>119</b>		APCH CRS <b>260°</b>	Rwy Idg <b>8001</b> TDZE <b>21</b> Arpt Elev <b>28</b>	[USN]	PENSACOLA NAS (FORREST SHERMAN FLD) (KNPA)		
RADAR required ▼				MISSED APPROACH: Climbing left turn to 1500 via NPA TACAN R-209 to FCTRY and hold.			
ATIS <b>124.35 266.8</b>		APP CON <b>120.65 270.8</b>		SHERMAN TOWER <b>120.7 340.2</b>		GND CON <b>121.7 336.4</b>	CLNC DEL <b>134.1 268.7</b>
ASR/ PAR							



SE-3, 07 AUG 2025 to 04 SEP 2025

**EMERG SAFE ALT 100 NM 3100**

CATEGORY	A	B	C	D	E
S-25R	500-1	479 (500-1)	500-1 $\frac{3}{8}$	479 (500-1 $\frac{3}{8}$ )	
<b>C</b> CIRCLING	520-1	492 (500-1)	540-1 $\frac{1}{2}$ 512 (600-1 $\frac{1}{2}$ )	600-2 572 (600-2)	640-2 $\frac{1}{4}$ 612 (700-2 $\frac{1}{4}$ )

**HIRL all rwys**  
**REIL all rwys**