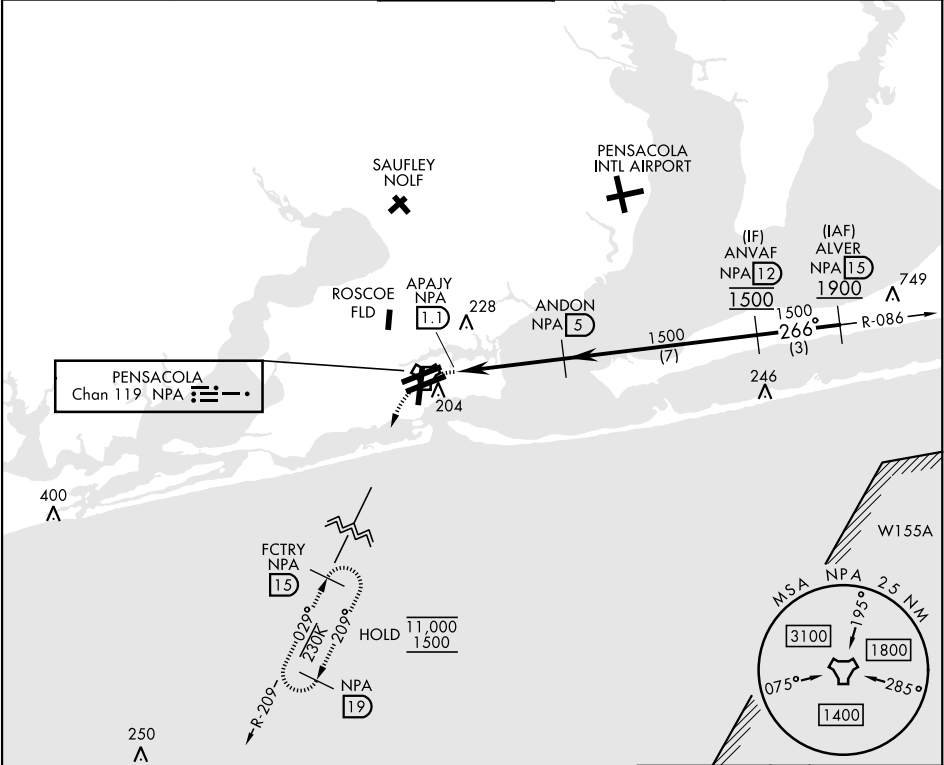


TACAN Y RWY 25L

TACAN NPA Chan 119	APCH CRS 266°	Rwy Idg TDZE 22 Arpt Elev 28	[USN]	PENSACOLA NAS (FORREST SHERMAN FLD) (KNPA)		
RADAR required				MISSED APPROACH: Climbing left turn to 1500 via NPA TACAN R-209 to FCTRY and hold.		
ATIS 124.35 266.8	APP CON 120.65 270.8	SHERMAN TOWER 120.7 340.2	GND CON 121.7 336.4	CLNC DEL 134.1 268.7	ASR/ PAR	



EMERG SAFE ALT 100 NM 3100					ELEV 28	TDZE 22
1500 NPA R-209	FCTRY NPA 15					
NPA TACAN		ANDON NPA 5	ANVAF NPA 12			
APA/Y NPA 1.1		NPA 1.8	266°			
0.5		3.9 NM	1500			
TCH 52		3.07°		266°		
1500		1500		1500		
CATEGORY	A	B	C	D	E	HIRL all rws REIL all rws
S-25L	460-1	438 (500-1)	460-1¼	438 (500-1¼)		
CIRCLING	520-1	492 (500-1)	540-1½ 512 (600-1½)	600-2 572 (600-2)	640-2¼ 612 (700-2¼)	

TACAN Y RWY 25L

SE-3, 07 AUG 2025 to 04 SEP 2025

SE-3, 07 AUG 2025 to 04 SEP 2025