

TACAN Y RWY 1

TACAN NPA Chan 119	APCH CRS 015°	Rwy Idg 7136 TDZE 28 Arpt Elev 28	[USN]	PENSACOLA NAS (FORREST SHERMAN FLD) (KNPA)			
RADAR required ▼				MISSED APPROACH: Climbing right turn to 1500 via NPA TACAN R-145 to CUPER and hold.			
ATIS 124.35 266.8	APP CON 120.65 270.8		SHERMAN TOWER 120.7 340.2		GND CON 121.7 336.4	CLNC DEL 134.1 268.7	ASR/ PAR

CAUTION: Intermediate seg length 4.6 NM is less than minimum 6 NM.

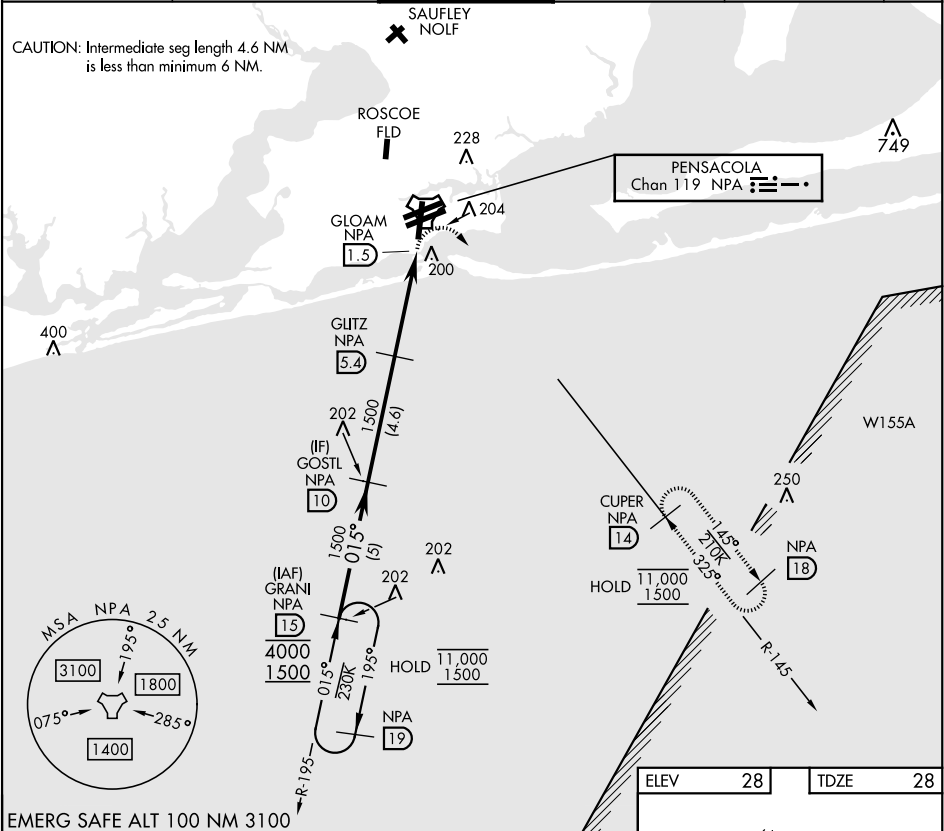
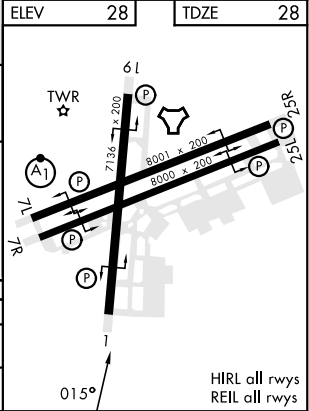


Figure 1 illustrates a 1500 MHz NPA frequency plan. It shows a 1500 MHz NPA (GOSTL) and a 1500 MHz NPA (GLITZ) with a 015° angle. A 3.00° TCH 56 is shown. A 3.9 NM distance is indicated between the 1500 MHz NPA and the 1500 MHz NPA (GLOAM). A 0.5 NM distance is indicated between the 1500 MHz NPA (GLOAM) and the 1500 MHz NPA (TACAN). A 1500 MHz NPA (CUPER) is shown with a 14 dBm power level. A 1500 MHz NPA (R-145) is shown with a 14 dBm power level.

CATEGORY	A	B	C	D	E
S-1	460-1	432 (500-1)	460-1½	432 (500-1½)	
CIRCLING	520-1	492 (500-1)	540-1½ 512 (600-1½)	600-2 572 (600-2)	640-2½ 612 (700-2½)



SE-3, 07 AUG 2025 to 04 SEP 2025

SE-3, 07 AUG 2025 to 04 SEP 2025