

PENSACOLA, FLORIDA

APCH CRS	Rwy Idg	8000
071°	TDZE	25
	Arprt Elev	28

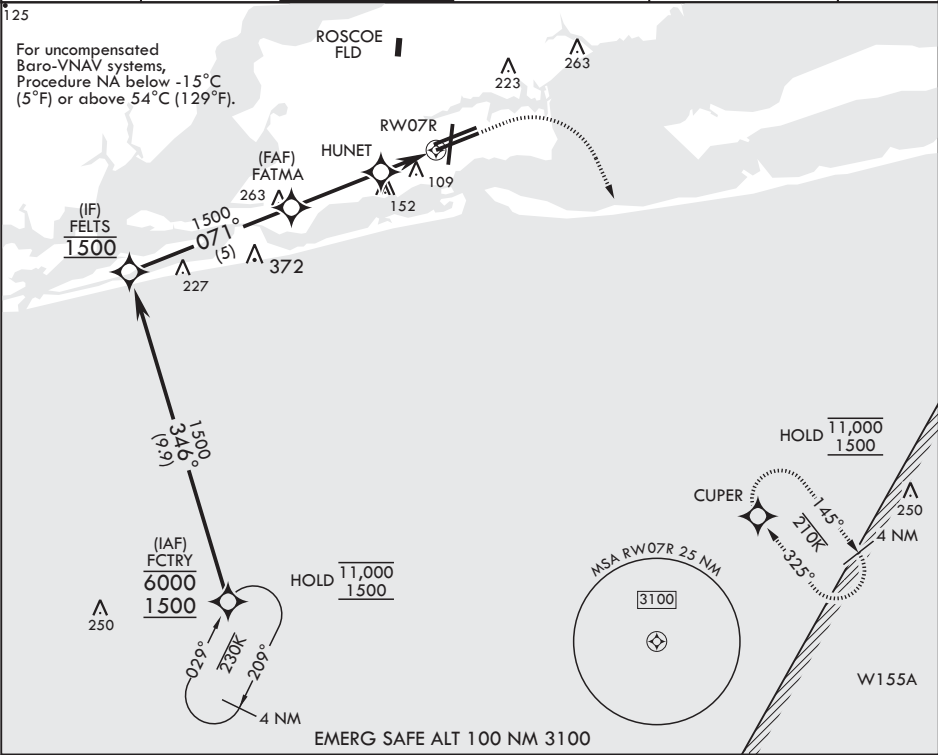
- (USN)

# RNAV (GPS) RWY 7R

PENSACOLA NAS (FORREST SHERMAN FLD) (KNPA)

RNP APCH-GPS	MISSED APPROACH: Climb to 800 then climbing right turn to 1500 direct CUPER and hold.
RADAR required	

ATIS 124.35 266.8	APP CON 120.65 270.8	SHERMAN TOWER 120.7 340.2	SHERMAN GND CON 121.7 336.4	SHERMAN CLNC DEL 134.1 268.7	ASR/PAR
----------------------	-------------------------	------------------------------	--------------------------------	---------------------------------	---------



GP 3.00° TCH 54		2.8 NM		1.7 NM								
CATEGORY	A	B	C	D	E							
LNAV/VNAV DA	275-1	250	(300-1)	279-1 254 (300-1)	377-1 352 (400-1)							
LNAV MDA	380-1		355	(400-1)								
CIRCLING	520-1	492	(500-1)	540-1½ 512 (600-1½)	600-2 572 (600-2)	640-2¼ 612 (700-2¼)						
HIRL all rws REIL all rws												

PENSACOLA, FLORIDA

30°21'N - 87°19'W PENSACOLA NAS (FORREST SHERMAN FLD) (KNPA)

Amtdr 4 12JUN25

# RNAV (GPS) RWY 7R

SE-3, 07 AUG 2025 to 04 SEP 2025

SE-3, 07 AUG 2025 to 04 SEP 2025