

PENSACOLA, FLORIDA

RNAV (GPS) RWY 25R

- (USN)

PENSACOLA NAS (FORREST SHERMAN FLD) (KNPA)

APCH CRS	Rwy Idg	8001
251°	TDZE	21
	Arprt Elev	28

RNP APCH-GPS	MISSED APPROACH: Climb to 800 then climbing left turn to 1500 direct FCTRY and hold.
RADAR required	

ATIS 124.35 266.8	APP CON 120.65 270.8	SHERMAN TOWER 120.7 340.2	SHERMAN GND CON 121.7 336.4	SHERMAN CLNC DEL 134.1 268.7	ASR/PAR
----------------------	-------------------------	------------------------------	--------------------------------	---------------------------------	---------

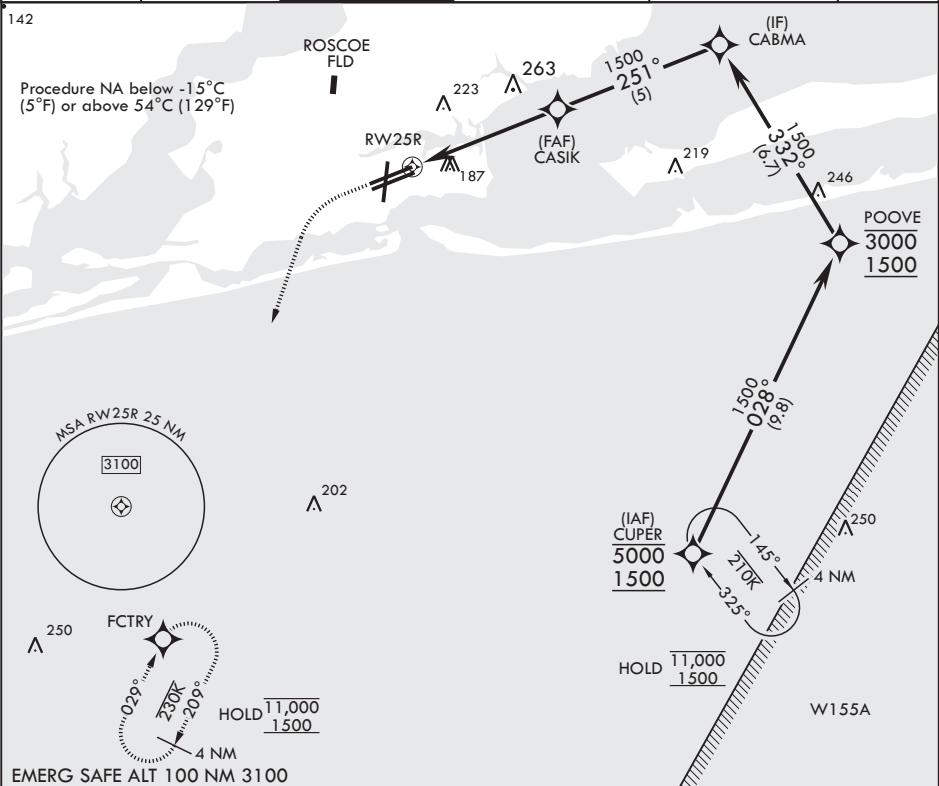
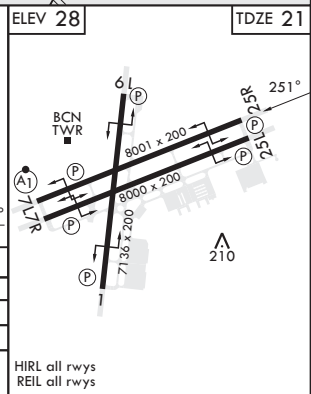


Diagram illustrating a flight path from RW25R to CASIK. The path starts at RW25R, goes 1.2 NM to a point, then 4.5 NM to CASIK. CASIK is 1500 units from CABMA at a 251-degree bearing. CASIK is also 1500 units from GP 3.00° TCH 56. The diagram includes a legend with symbols for 800, 1500, and FCTRY.

CATEGORY	A		B	C		D
RNAV/VNAV DA	460-1¼		439	(500-1¼)		
RNAV MDA	460-1	439	(500-1)	460-1¼	439	(500-1¼)
<b>C</b> CIRCLING	520-1	492	(500-1)	540-1½ 512 (600-½)	600-2 572 (600-2)	



PENSACOLA, FLORIDA

30°21'N - 87°19'W PENSACOLA NAS (FORREST SHERMAN FLD) (KNPA)

Amtdt 8 12JUN25

RNAV (GPS) RWY 25R

SE-3, 07 AUG 2025 to 04 SEP 2025

SE-3, 07 AUG 2025 to 04 SEP 2025