

PENSACOLA, FLORIDA

RNAV (GPS) RWY 25L

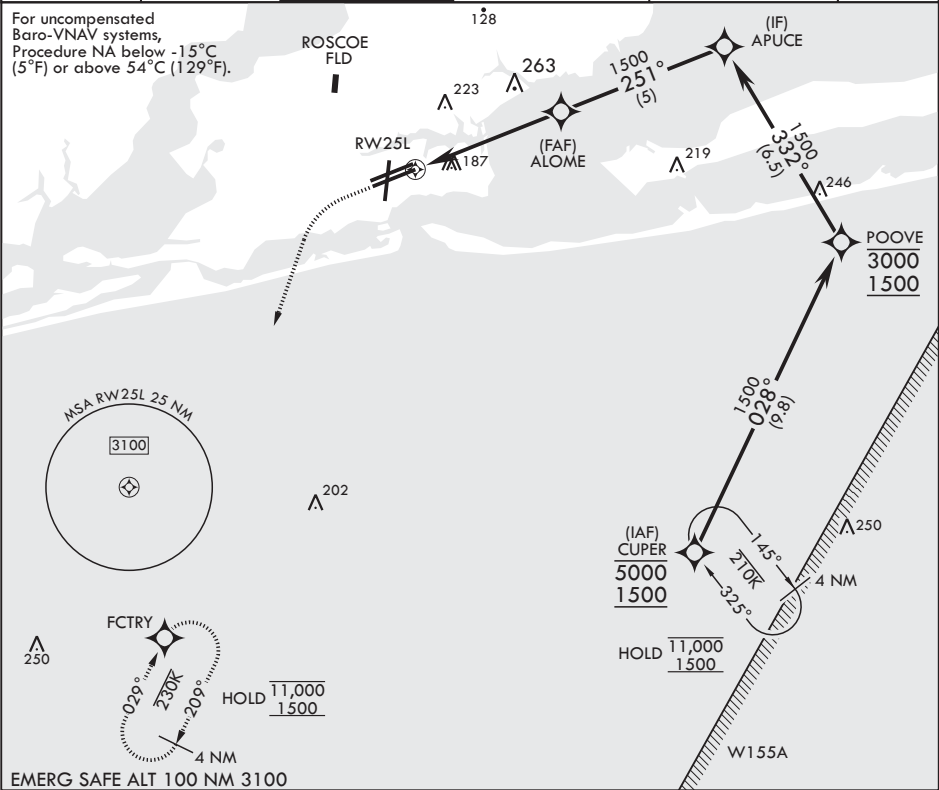
- (USN)

PENSACOLA NAS (FORREST SHERMAN FLD) (KNPA)

APCH CRS	Rwy Idg	8000
251°	TDZE	22
	Arpt Elev	28

RNP APCH-GPS	MISSED APPROACH: Climb to 800 then climbing left turn to 1500 direct FCTRY and hold.
RADAR required	

ATIS 124.35 266.8	APP CON 120.65 270.8	SHERMAN TOWER 120.7 340.2	SHERMAN GND CON 121.7 336.4	SHERMAN CLNC DEL 134.1 268.7	ASR/PAR
----------------------	-------------------------	------------------------------	--------------------------------	---------------------------------	---------



EMERG SAFE ALT 100 NM 3100		ELEV 28		TDZE 22	
CATEGORY	A	B	C	D	
RNAV/VNAV DA	460-1¼	438	(500-1¼)		
RNAV MDA	460-1	438	(500-1)	460-1¼	438 (500-1¼)
CIRCLING	520-1	492	(500-1)	540-1½ 512 (600-1½)	600-2 572 (600-2)

PENSACOLA, FLORIDA

30°21'N - 87°19'W PENSACOLA NAS (FORREST SHERMAN FLD) (KNPA)

Amtdr 4 12JUN25

RNAV (GPS) RWY 25L

SE-3, 07 AUG 2025 to 04 SEP 2025