

PENSACOLA, FLORIDA

RNAV (GPS) RWY 19

- (USN)

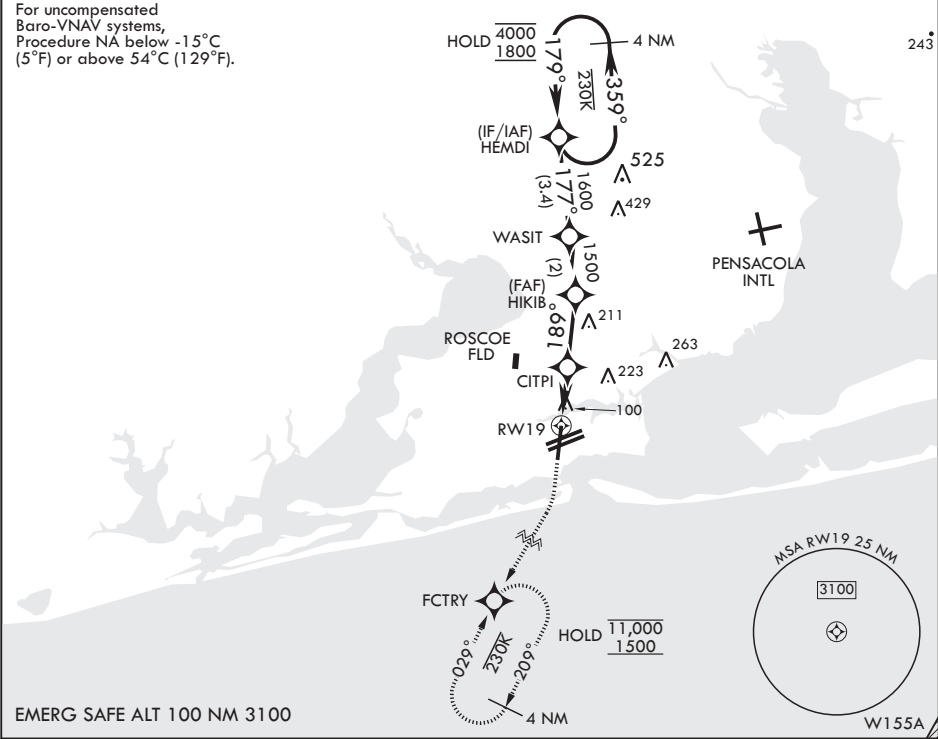
PENSACOLA NAS (FORREST SHERMAN FLD) (KNPA)

APCH CRS	Rwy Idg	7136
189°	TDZE	22
	Arprt Elev	28

RNP APCH-GPS	MISSED APPROACH: Climb to 800 then climbing right turn to 1500 direct FCTRY and hold.
RADAR required	

ATIS 124.35 266.8	APP CON 120.65 270.8	SHERMAN TOWER 120.7 340.2	SHERMAN GND CON 121.7 336.4	SHERMAN CLNC DEL 134.1 268.7	ASR/PAR
----------------------	-------------------------	------------------------------	--------------------------------	---------------------------------	---------

For uncompensated Baro-VNAV systems, Procedure NA below -15°C (5°F) or above 54°C (129°F).



EMERG SAFE ALT 100 NM 3100

800

1500

FCTRY

HEMDI

WASIT

HIKIB

CITPI

RW19

1.2 NM to RW19

2 NM

2.5 NM

GP 3.00°

TCH 55

4 NM holding pattern

359°

179°

4000

1800

BCN TWR

61

189°

2595 SR

8001 x 200

8000 x 200

7136 x 200

210

7136

210

7136

210

CATEGORY

A

B

C

D

E

LNAV/VNAV DA

272-1

250 (300-1)

275-1

253 (300-1)

274 (300-1)

380-1

358 (400-1)

LNAV MDA

440-1

418 (500-1)

440-1½

418

418

500-1½

CIRCLING

520-1

492 (500-1)

540-1½

512 (600-1½)

600-2

572 (600-2)

640-2¼

612 (700-2¼)

PENSACOLA, FLORIDA

30°21'N - 87°19'W PENSACOLA NAS (FORREST SHERMAN FLD) (KNPA)

Amdt 6 12JUN25

RNAV (GPS) RWY 19

SE-3, 07 AUG 2025 to 04 SEP 2025

SE-3, 07 AUG 2025 to 04 SEP 2025