

PENSACOLA, FLORIDA

## RNAV (GPS) RWY 1

- (USN)

PENSACOLA NAS (FORREST SHERMAN FLD) (KNPA)

APCH CRS 009°	Rwy Idg 7136 TDZE 28 Arpt Elev 28
------------------	---

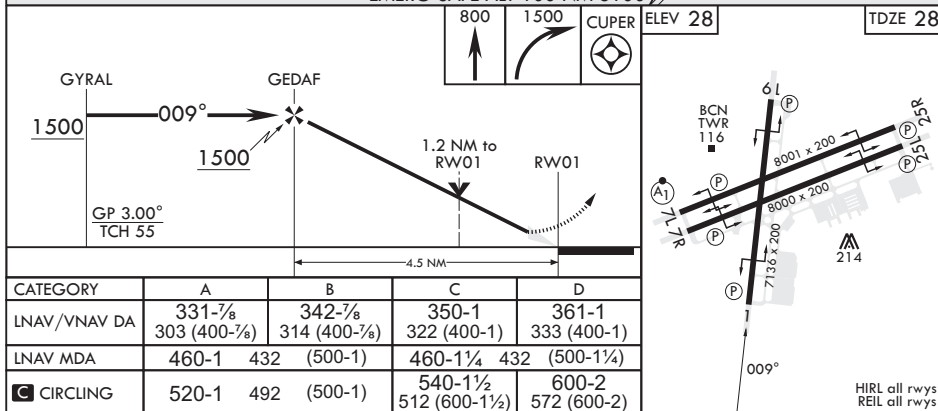
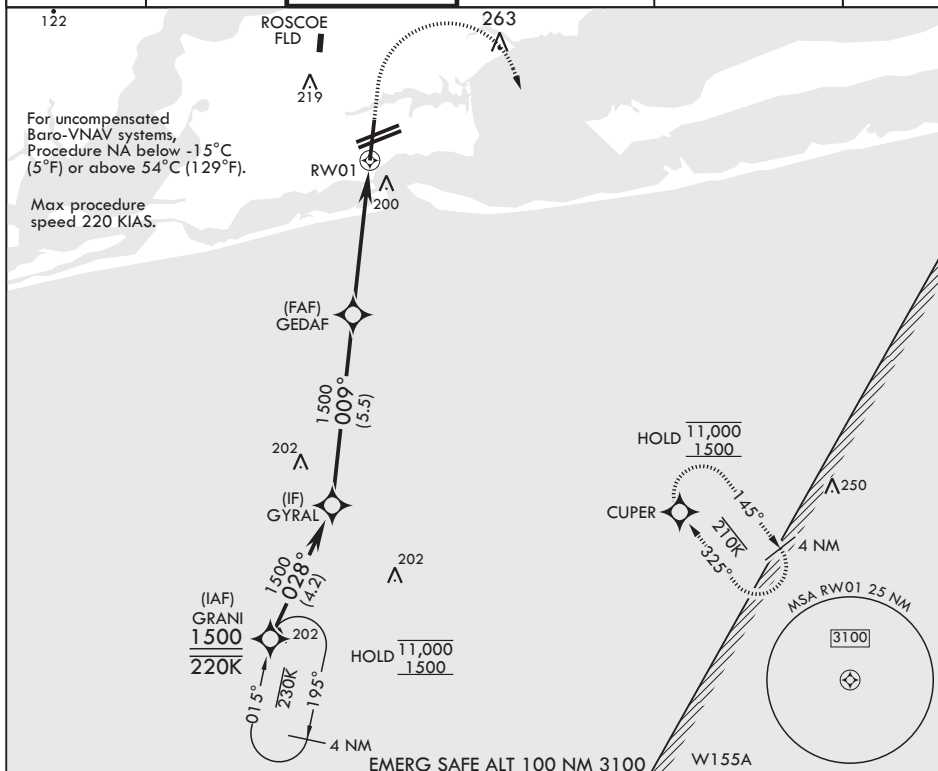
RNP APCH-GPS

RADAR required



**MISSED APPROACH:** Climb to 800 then climbing right turn to 1500 direct CUPER and hold.

ATIS 124.35 266.8	APP CON 120.65 270.8	SHERMAN TOWER 120.7 340.2	SHERMAN GND CON 121.7 336.4	SHERMAN CLNC DEL 134.1 268.7	ASR/PAR
----------------------	-------------------------	------------------------------	--------------------------------	---------------------------------	---------



PENSACOLA, FLORIDA

30°21'N - 87°19'W PENSACOLA NAS (FORREST SHERMAN FLD) (KNPA)

Amdt 5 12JUN25

## RNAV (GPS) RWY 1

SE-3, 07 AUG 2025 to 04 SEP 2025

SE-3, 07 AUG 2025 to 04 SEP 2025