

PENSACOLA, FLORIDA

ILS Z or LOC Z RWY 7L

LOC/DME I-NPA 109.3 Chan 30	APCH CRS 071°	Rwy Idg 8001 TDZE 23 Arpt Elev 28
---	-------------------------	--

[USN]

PENSACOLA NAS (FORREST SHERMAN FLD) (KNPA)

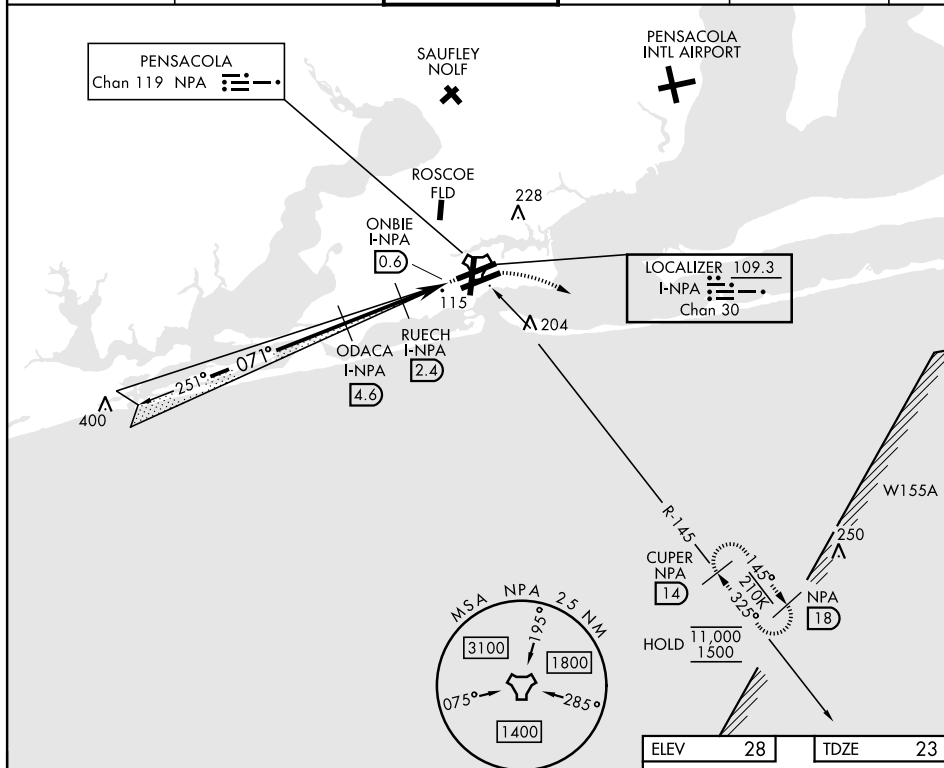
RADAR, TACAN, and DME required.

T * When ALS inop, increase vis to $\frac{3}{4}$ mile.
 ** When ALS inop, increase vis to 1 mile.

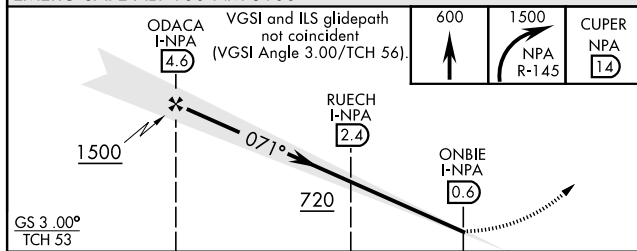
ALSF-1

MISSED APPROACH: Climb to 600. Then climbing right turn to 1500 via NPA R-145 to CUPER and hold.

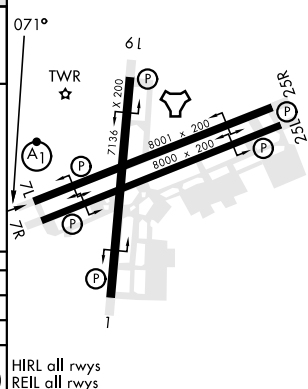
ATIS 124.35 266.8	APP CON 120.65 270.8	SHERMAN TOWER 120.7 340.2	GND CON 121.7 336.4	CLNC DEL 134.1 268.7	ASR/ PAR
----------------------	-------------------------	------------------------------	------------------------	-------------------------	-------------



EMERG SAFE ALT 100 NM 3100



CATEGORY	A	B	C	D	E
S-ILS 7L*	223-½		200	(200-½)	
S-LOC 7L**	480-½	457 (500-½)	480-¾	457	(500-¾)
CIRCLING	520-1	492 (500-1)	540-1½ 512 (600-1½)	600-2 572 (600-2)	640-2½ 612 (700-2½)



PENSACOLA, FLORIDA

30° 21' N-87° 19' W

PENSACOLA NAS (FORREST SHERMAN FLD) (KNPA)

Amdt 5 10JUL25

ILS Z or LOC Z RWY 7L

SE-3, 07 AUG 2025 to 04 SEP 2025

SE-3, 07 AUG 2025 to 04 SEP 2025