

PENSACOLA, FLORIDA

ILS or RNAV (GPS) Y RWY 7L

LOC/DME I-NPA 109.3 Chan 30	APCH CRS 071°	Rwy Idg TDZE Arpt Elev 8001 23 28
---	-------------------------	---

[USN]

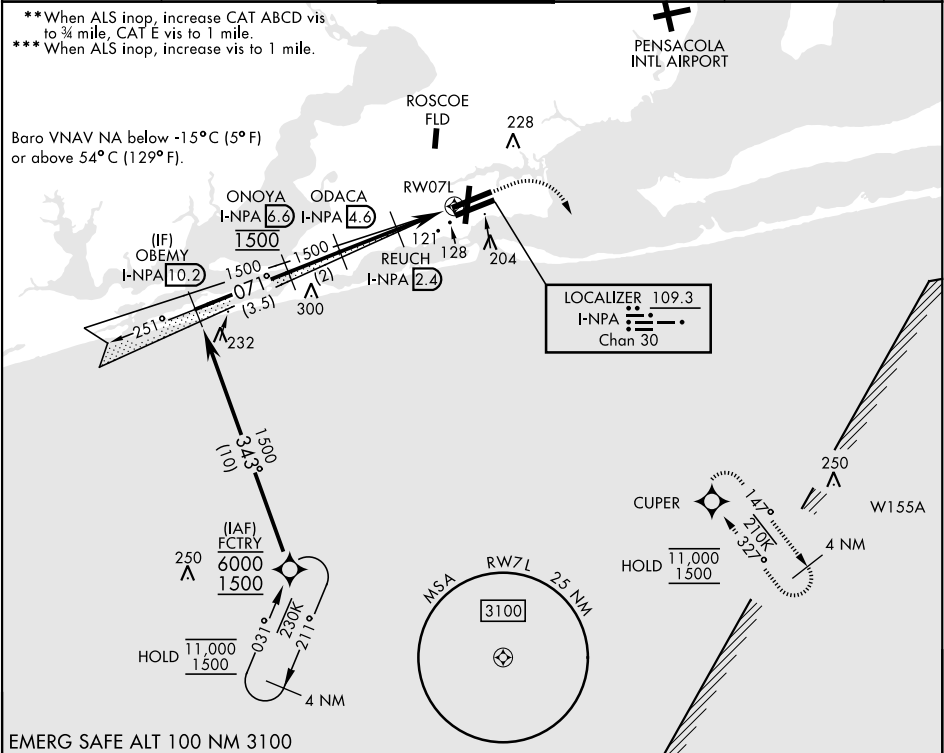
PENSACOLA NAS (FORREST SHERMAN FLD) (KNPA)

RNP APCH - GPS
RADAR required
▼ * When ALS inop, increase vis to ¾ mile.



MISSED APPROACH: Climb to 600, then climbing right turn to 1500 direct CUPER and hold.

ATIS 124.35 266.8	APP CON 120.65 270.8	SHERMAN TOWER 120.7 340.2	GND CON 121.7 336.4	CLNC DEL 134.1 268.7	ASR/ PAR
-----------------------------	--------------------------------	-------------------------------------	-------------------------------	--------------------------------	-------------



EMERG SAFE ALT 100 NM 3100

<div>OBEMY I-NPA 10.2</div> <div>ONOYA I-NPA 6.6</div> <div>ODACA I-NPA 4.6</div> <div>RUECH I-NPA 2.4</div>					<div>600</div> <div>crs 071°</div>	<div>1500</div>	<div>CUPER</div>	<div>ELEV 28</div>	<div>TDZE 23</div>		
<div>GS 3.00°</div> <div>TCH 53</div>					<div>071°</div>	<div>1500</div>	<div>1500</div>	<div>1500</div>	<div>780</div>	<div>0.9 NM to RW07L</div>	<div>RW07L</div>
					<div>2.2 NM</div>		<div>2.2 NM</div>				
CATEGORY	A	B	C	D	E						
S-ILS 7L *	223-½		200		(200-½)						
LNAV/VNAV DA **	274-½		251	(300-½)		283-½		377-¾			
						260 (300-½)		354 (400-¾)			
LNAV MDA ***	380-½		357	(400-½)		380-¾		357		(400-¾)	
CIRCLING	520-1		492	(500-1)		540-1½		600-2		640-2¼	
						512 (600-½)		572 (600-2)		612 (700-2¼)	

TWR 133

61

7136 ± 200

8001 ± 200

8000 ± 200

253

25R

071°

HIREL all rws

REIL all rws

PENSACOLA, FLORIDA

30°21'N-87°19'W

PENSACOLA NAS (FORREST SHERMAN FLD) (KNPA)

Amcl 6 10JUL25

ILS or RNAV (GPS) Y RWY 7L

SE-3, 07 AUG 2025 to 04 SEP 2025

SE-3, 07 AUG 2025 to 04 SEP 2025