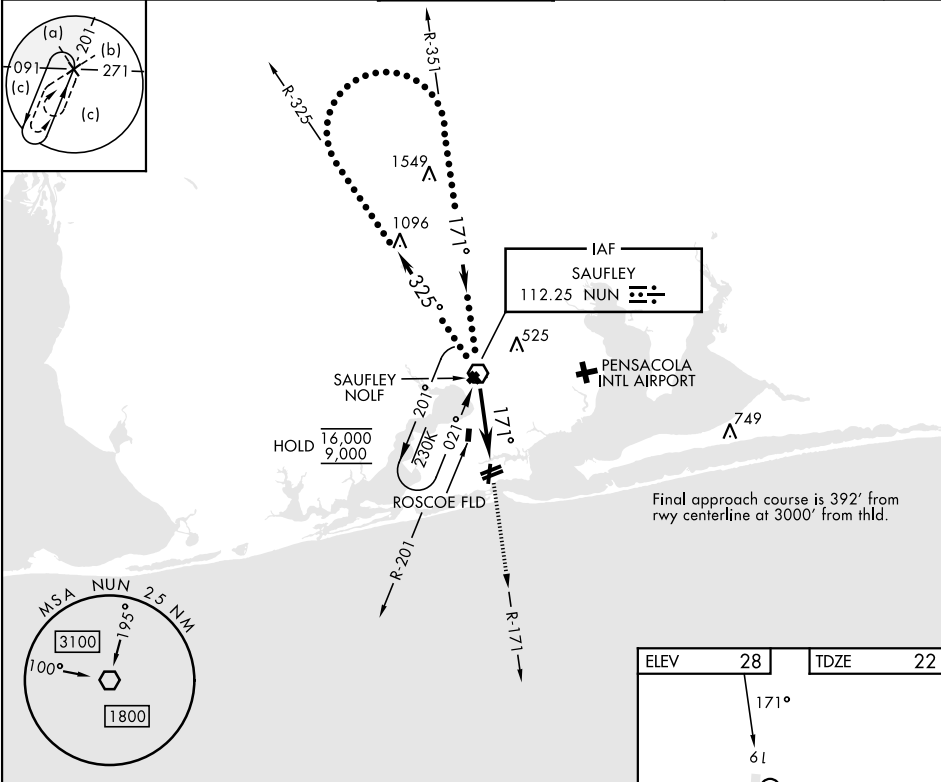


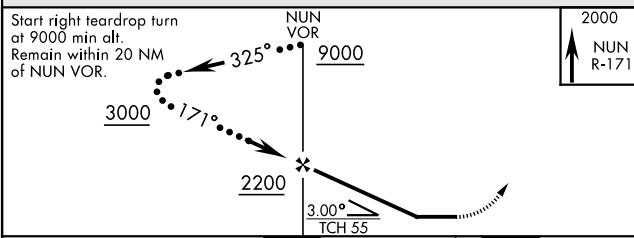
PENSACOLA, FLORIDA

HI-VOR Z RWY 19

VOR NUN 112.25	APCH CRS 171°	Rwy Idg 7136 TDZE 22 Arpt Elev 28	[UN]	PENSACOLA NAS (FORREST SHERMAN FLD) (KNPA)			
RADAR required				MISSED APPROACH: Climb to 2000 via NUN VOR R-171. Expect RADAR vectors within 3 NM of MAP.			
Procedure not available when Pensacola South Military Operating Area (MOA) is active.							
ATIS 124.35 266.8	PENSACOLA APP CON 120.65 270.8		SHERMAN TOWER 120.7 340.2		GND CON 121.7 336.4	CLNC DEL 134.1 268.7	ASR/ PAR



EMERG SAFE ALT 100 NM 3100



CATEGORY	C	D	E
S-19	540-1 $\frac{1}{2}$	518 (600-1 $\frac{1}{2}$)	
CIRCLING	540-1 $\frac{1}{2}$ 512 (600-1 $\frac{1}{2}$)	600-2 572 (600-2)	640-2 $\frac{1}{4}$ 612 (700-2 $\frac{1}{4}$)

HIRL all rwys REIL all rwys				
FAF to MAP 6.0 NM				
Knots	120	140	160	180
Min:Sec	3:00	2:34	2:15	2:00

PENSACOLA, FLORIDA 30°21'N-87°19'W PENSACOLA NAS (FORREST SHERMAN FLD) (KNPA)

Amtd 1 12JUN25

HI-VOR Z RWY 19

SE-3, 07 AUG 2025 to 04 SEP 2025

SE-3, 07 AUG 2025 to 04 SEP 2025