
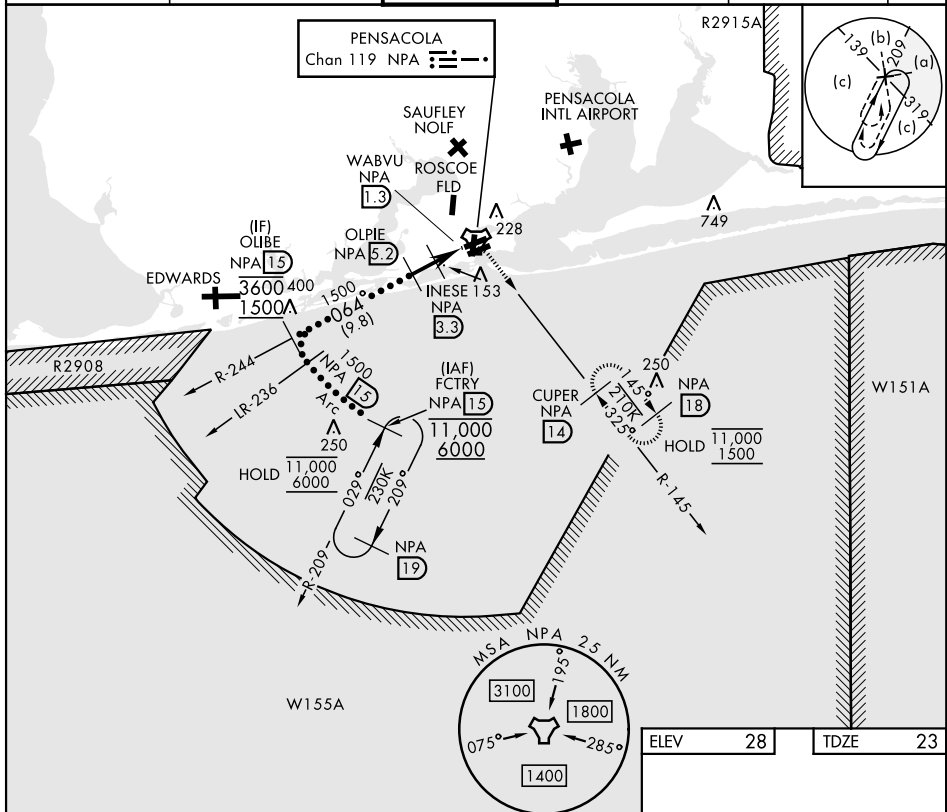
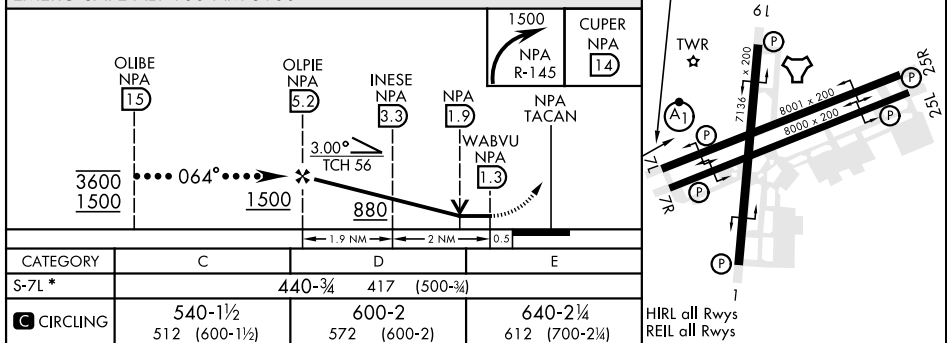


HI-TACAN Z RWY 7L

TACAN NPA Chan 119	APCH CRS 064°	Rwy Idg 8001 TDZE 23 Arpt Elev 28	[USN] PENSACOLA NAS (FORREST SHERMAN FLD) (KNPA)					
RADAR required ▼ * When ALS inop, increase vis to 1½ miles.			ALS-1 	MISSED APPROACH: Climbing right turn to 1500 via NPA TACAN R-145 to CUPER and hold.				
ATIS 124.35 266.8		PENSACOLA APP CON 120.65 270.8		SHERMAN TOWER 120.7 340.2		GND CON 121.7 336.4	CLNC DEL 134.1 268.7	ASR/ PAR



EMERG SAFE ALT 100 NM 3100



HI-TACAN Z RWY 7L

SE-3, 07 AUG 2025 to 04 SEP 2025

SE-3. 07 AUG 2025 to 04 SEP 2025