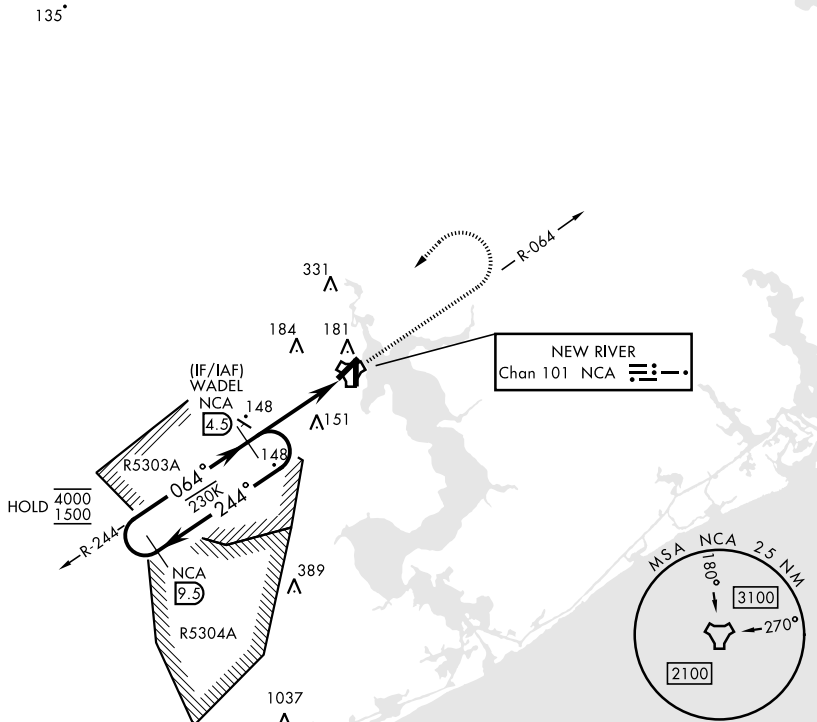
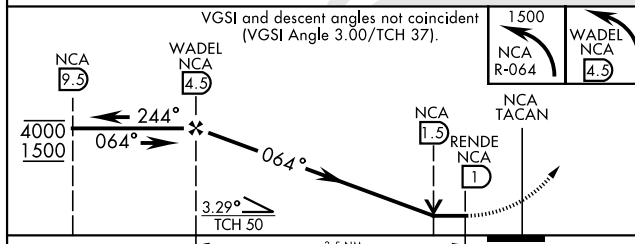


TACAN RWY 5

TACAN NCA Chan 101	APCH CRS 064°	Rwy Idg 5125 TDZE 26 Arpt Elev 26	[UN]	NEW RIVER MCAS (MCCUTCHEON FLD) (KNCA)		
RADAR required			MISSED APPROACH: Climbing left turn to 1500 via NCA TACAN R-064, then left turn direct WADEL and hold.			
ATIS ★ 288.325	CHERRY POINT APP CON 119.35 377.175	TOWER ★ 134.95 (CTAF) 0★ 360.2	GND CON 121.8 254.275	CINC DEL 269.25	ASR/PAR	



EMERG SAFE ALT 100 NM 3400



CATEGORY	A	B	C	D
S-5	420-1	394 (400-1)	420-1 $\frac{1}{8}$	394 (400-1 $\frac{1}{8}$)
CIRCLING	500-1	474 (500-1)	700-2 674 (700-2)	700-2 $\frac{1}{4}$ 674 (700-2 $\frac{1}{4}$)

