

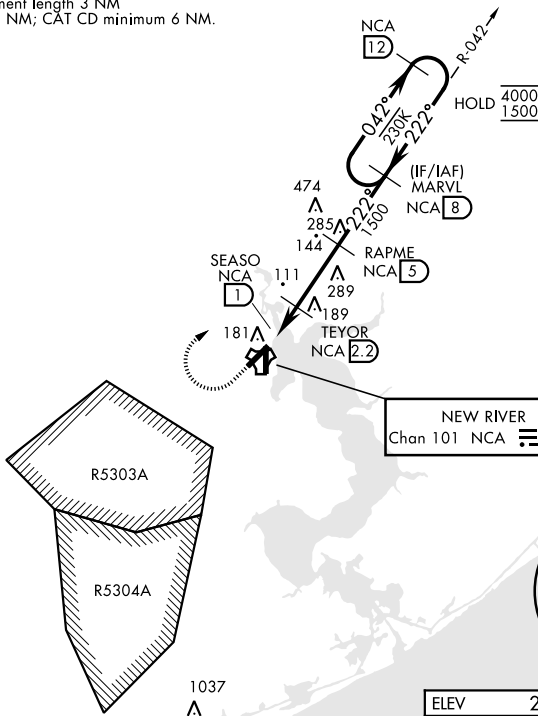
TACAN RWY 23

TACAN RWT 23

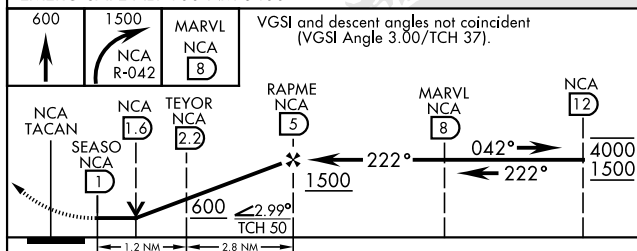
TACAN NCA Chan <b>101</b>	APCH CRS <b>222°</b>	Rwy Idg <b>5125</b> TDZE <b>24</b> Arprt Elev <b>26</b>	[USN]	NEW RIVER MCAS (MCCUTCHEON FLD) (KNCA)			
RADAR required			MISSED APPROACH: Climb to 600 then climbing right turn to 1500, intercept NCA TACAN R-042 to MARVL and hold.				
ATIS ★ <b>288.325</b>	CHERRY POINT APP CON <b>119.35 377.175</b>		TOWER ★ <b>134.95</b> (CTAF) <b>0★ 360.2</b>		GND CON <b>121.8 254.275</b>	CLNC DEL <b>269.25</b>	ASR/PAR

135

CAUTION: Intermediate segment length 3 NM  
less than CAT AB minimum 5 NM; CAT CD minimum 6 NM.



EMERG SAFE ALT 100 NM 3400



CATEGORY	A		B		C		D	
S-23	440-1	416	(500-1)		440-1½	416	(500-1½)	
CIRCLING	500-1	474	(500-1)		700-2 674 (700-2)	700-2¼ 674 (700-2¼)		

