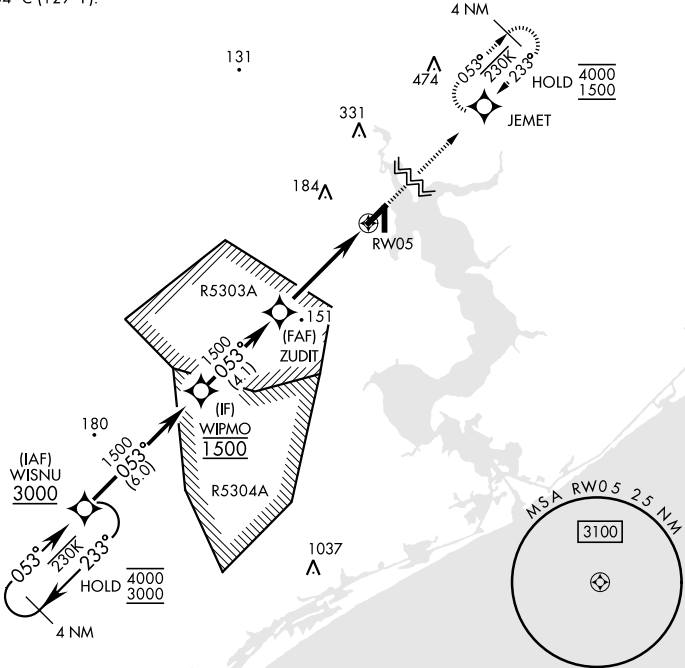


JACKSONVILLE, NORTH CAROLINA

RNAV (GPS) RWY 5

WAAS Chan 77243 W05A	APCH CRS 053°	Rwy Idg 5125 TDZE 26 Arpt Elev 26	[USN] NEW RIVER MCAS (MCCUTCHEON FLD) (KNCA)		
RNP APCH			MISSED APPROACH: Climb to 1500 direct JEMET and hold.		
RADAR required					
ATIS ★ 288.325	CHERRY POINT APP CON 119.35 377.175	TOWER ★ 134.95(CTAF) 0★ 360.2	GND CON 121.8 254.275	CLNC DEL 269.25	ASR/PAR

For uncompensated Baro-VNAV systems, LNAV/VNAV NA below -15°C (5°F) or above 54°C (129°F).



EMERG SAFE ALT 100 NM 3400

WISNU

3000

053°

WIPMO

1500

ZUDIT

1500

1.2 NM to RW05

4.5 NM

RW05

GP 3.00° TCH 50

VGSI and descent angles not coincident (VGSI Angle 3.00/TCH 37)

1500

JEMET

CATEGORY	A	B	C	D
LPV DA	226-3/4		200	(200-3/4)
LNAV/VNAV DA	308-7/8 282 (300-%)	319-7/8 293 (300-%)	327-7/8 301 (400-%)	338-7/8 312 (400-%)
LNAV MDA	440-1	414 (500-1)	440-1 1/8	414 (500-1 1/8)
CIRCLING	500-1	474 (500-1)	700-2 674 (700-2)	700-2 1/4 674 (700-2 1/4)

ELEV 26

TDZE 26

181

TWR

177

5125 x 150

5125 x 150

053°

A2

HIRL all Rwy 0

JACKSONVILLE, NORTH CAROLINA

34°43'N-77°26'W

NEW RIVER MCAS (MCCUTCHEON FLD) (KNCA)

Amtd 9 10JUL25

RNAV (GPS) RWY 5

SE-2, 07 AUG 2025 to 04 SEP 2025

SE-2, 07 AUG 2025 to 04 SEP 2025