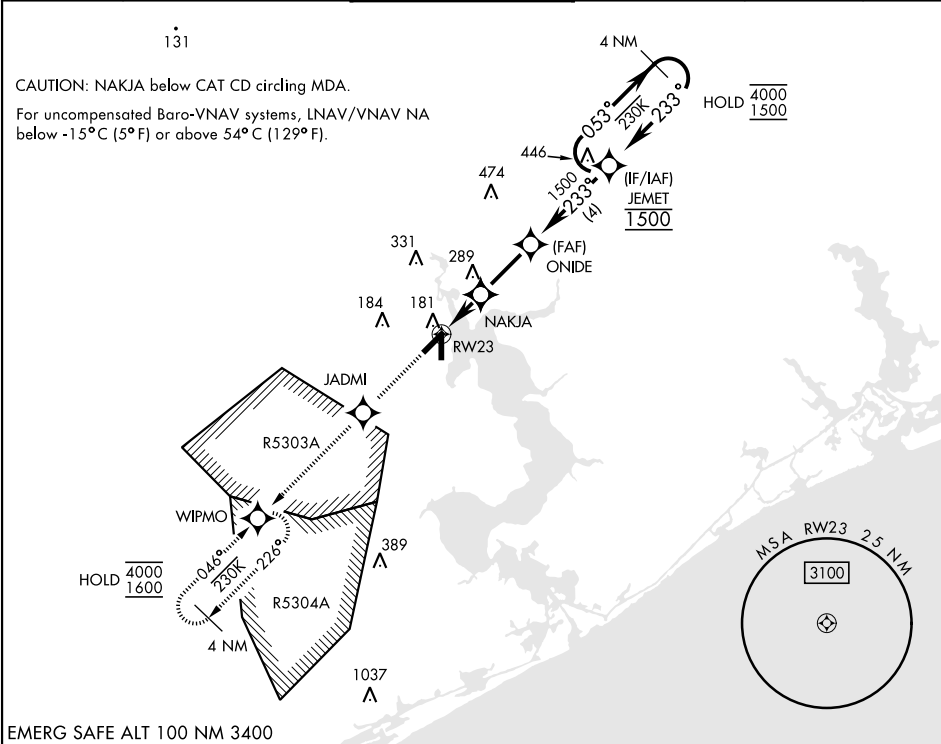


RNAV (GPS) RWY 23

WAAS Chan 92556 W23A	APCH CRS 233°	Rwy Idg 5125 TDZE 24 Arpt Elev 26	[USN]	NEW RIVER MCAS (MCCUTCHEON FLD)	(KNCA)
RNP APCH			MISSED APPROACH: Climb to 1600 direct JADMI, track 233° to WIPMO and hold.		
RADAR required					

ATIS ★ 288.325	CHERRY POINT APP CON 119.35 377.175	TOWER ★ 134.95(CTAF) 0★ 360.2	GND CON 121.8 254.275	CLNC DEL 269.25	ASR/PAR
--------------------------	---	---	---------------------------------	---------------------------	---------



EMERG SAFE ALT 100 NM 3400

1600	JADMI	WIPMO	VGSI and descent angles not coincident (VGSI Angle 3.00/TCH 37)				ELEV 26	TDZE 24
CATEGORY		A	B	C	D			
LPV DA		224-3/4		200	(200-3/4)			
LNAV/VNAV DA		312-7/8 288 (300-7/8)	323-7/8 299 (300-7/8)	331-7/8 307 (400-7/8)	342-7/8 318 (400-7/8)			
LNAV MDA		440-1	416 (500-1)	440-1 1/8	416 (500-1 1/8)			
CIRCLING		500-1	474 (500-1)	700-2 674 (700-2)	700-2 1/4 674 (700-2 1/4)	HIRL all rwys 0		

RNAV (GPS) RWY 23

SE-2, 07 AUG 2025 to 04 SEP 2025

SE-2, 07 AUG 2025 to 04 SEP 2025