

JACKSONVILLE, NORTH CAROLINA

RNAV (GPS) RWY 19

APCH CRS	Rwy Idg	4789
188°	TDZE	23
	Arpt Elev	26

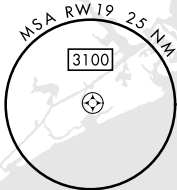
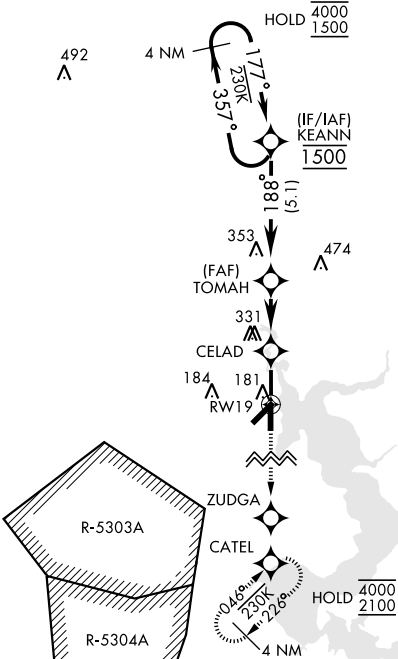
[USN] NEW RIVER MCAS (MCCUTCHEON FLD) (KNCA)

RNP APCH	MISSED APPROACH: Climb to 2100 direct ZUDGA, direct CATEL and hold.
RADAR required	




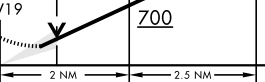
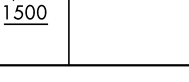

ATIS ★ 288.325	CHERRY POINT APP CON 119.35 377.175	TOWER ★ 134.95(CTAF) 0★ 360.2	GND CON 121.8 254.275	CLNC DEL 269.25	ASR/PAR
-------------------	--	----------------------------------	--------------------------	--------------------	---------

*154

Baro VNAV NA below -15°C (5°F)
and above 54°C (129°F).



EMERG SAFE ALT 100 NM 3400

2100 		ZUDGA 		CATEL 		VGSI and descent angles not coincident (VGSI Angle 3.00/TCH 41)				ELEV 26		TDZE 23	
						TOMAH		KEANN		4 NM Holding Pattern			
CATEGORY		A		B		C		D					
LNAV/VNAV DA		313-7/8 290 (300-7/8)		323-7/8 300 (300-7/8)		331-7/8 308 (400-7/8)		342-7/8 319 (400-7/8)					
LNAV MDA		440-1 417 (500-1)		440-1 1/8 417 (500-1 1/8)		700-2 674 (700-2)		700-2 1/4 674 (700-2 1/4)					
CIRCLING		500-1 474 (500-1)											
HIRL all Rwys 													

JACKSONVILLE, NORTH CAROLINA

34° 43'N-77° 26'W

NEW RIVER MCAS (MCCUTCHEON FLD) (KNCA)

Amdt 6 10JUL25

RNAV (GPS) RWY 19

SE-2, 07 AUG 2025 to 04 SEP 2025

SE-2, 07 AUG 2025 to 04 SEP 2025