

APP CRS	Rwy Idg	5300
069°	TDZE	1723
	Apt Elev	1723

RNAV (GPS) RWY 7

CHAUTAUQUA COUNTY/JAMESTOWN (JHW)

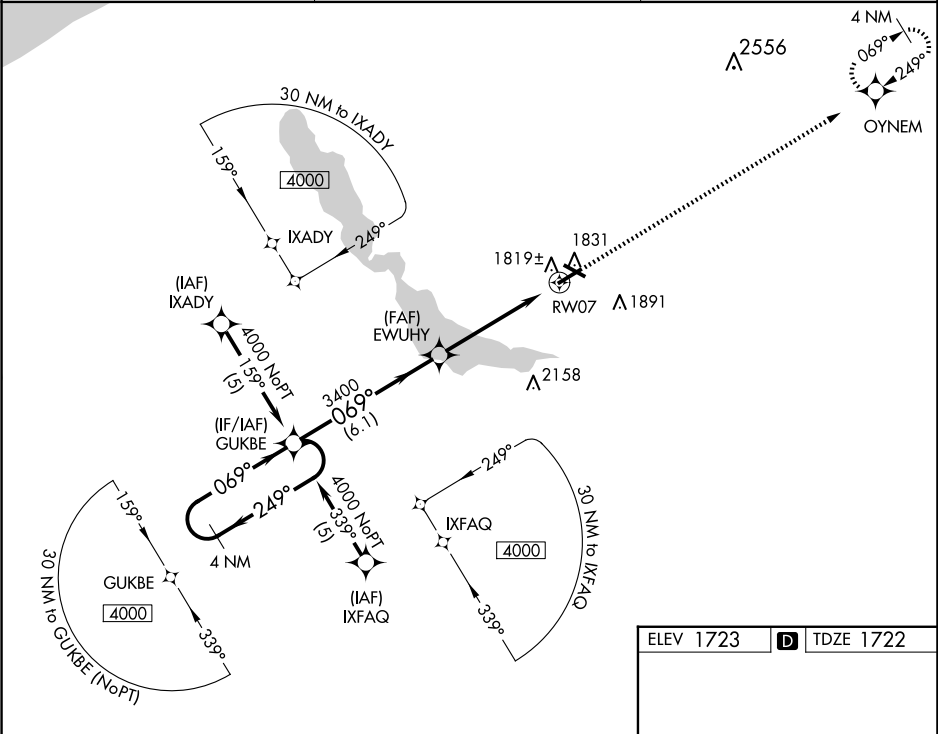
RNP APCH-GPS.

▼

Helicopter visibility reduction below 1 SM NA. When local altimeter setting not received, use Dunkirk altimeter setting: increase all MDAs 200 feet and visibility LNAV Cats C/D ½ SM, Circling Cat C ½ SM and Circling Cat D ¾ SM. Rwy 7 Straight-in/Circling and Circling to Rwy 13/31 NA at night.

MISSED APPROACH:  
Climb to 4000 direct OYNEM and hold.

AWOS-3PT 118.425	BUFFALO APP CON ★ 126.05	UNICOM 122.975 (CTAF) ①
---------------------	-----------------------------	----------------------------



4 NM Holding Pattern

GUKBE

4000

249°

069°

EWUHY

3400

3.04° TCH 52

RW07

6.1 NM

5 NM

4000

OYNEM

ELEV 1723

TDZE 1723

REIL Rwy 31 ①

MIRL Rwy 13-31 ①

HIRL Rwy 7-25 ①

CATEGORY	A	B	C	D
LNAV MDA	2120-1	398 (400-1)	2120-1¼	398 (400-1¼)
CIRCLING	2200-1	477 (500-1)	2260-1½	2340-2
			537 (600-1½)	617 (700-2)