

| | | |
|---|------------------------|---|
| LOC/DME I-JHW 109.7 Chan 34 | APP CRS 249° | Rwy Idg 5300 TDZE 1721 Apt Elev 1723 |
|---|------------------------|---|

ILS or LOC RWY 25
CHAUTAUQUA COUNTY/JAMESTOWN (JHW)

⚠ Circling to Rwy 13/31 NA at night. Autopilot coupled approach NA below 2420. VDP NA with Dunkirk altimeter setting. Cat D SI NA when using Dunkirk altimeter. When local altimeter setting not received, use Dunkirk altimeter setting and increase S-ILS 25 DA to 2161 and all MDA 200 feet; increase S-ILS 25 all Cats visibility ¾ mile; increase S-LOC 25 Cats A and B visibility to ¾, Circling Cats A and B 1¼, increase S-LOC 25 Cats C and D visibility to 2, Circling Cats C visibility 2¾ and D visibility 3, DIPRE fix minimums increase S-LOC 25 Cats C and D visibility 1½, and Circling Cats C visibility 2 and Cat D visibility 2¾ mile. For inoperative MALSR when using Dunkirk altimeter setting, increase S-ILS 25 all Cats visibility 1½ mile. VDP NA when using Dunkirk altimeter setting.

MALSR

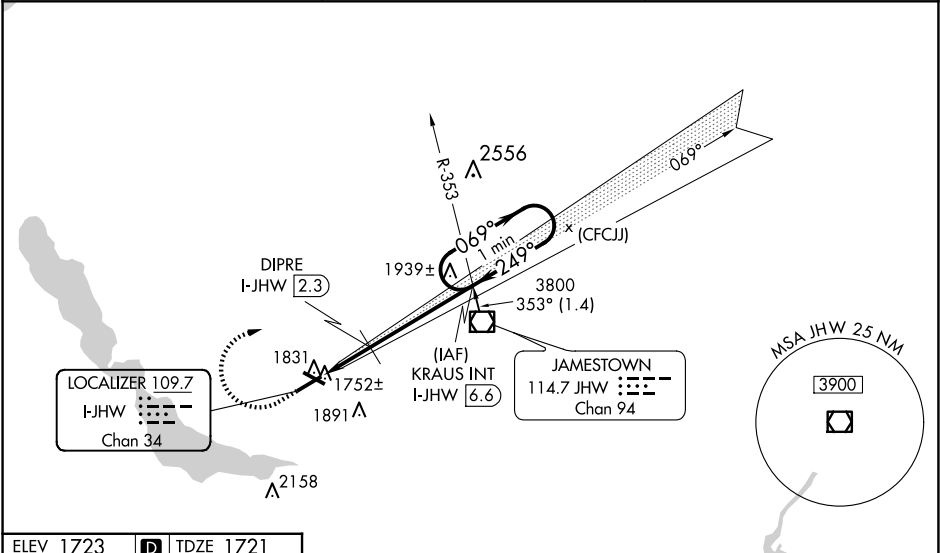


MISSED APPROACH: Climb to 2420 then climbing right turn to 3800 on heading 125° and I-JHW LOC course NE to KRAUS INT/ I-JHW 6.6 DME and hold.

AWOS-3PT
118.425

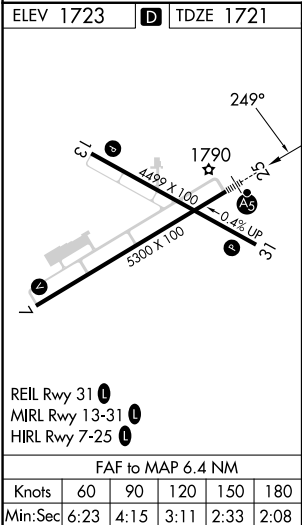
BUFFALO APP CON★
126.05

UNICOM
122.975 (CTAF) 0



NE-2, 07 AUG 2025 to 04 SEP 2025

NE-2, 07 AUG 2025 to 04 SEP 2025



| | | | | | |
|------|-------------|------------------|--------------|--------------------------|-------------------------------|
| 2420 | 3800 | LOC crs NE | KRAUS INT | KRAUS INT I-JHW [6.6] | One Minute Holding Pattern |
| ↑ | hdg 125° | | | 3800 | |
| | | | | | |