

VORTAC OSH 116.75 Chan 114 (Y)	APP CRS 360°	Rwy Idg TDZE Apt Elev	8002 808 808
--	------------------------	-----------------------------	---

VOR RWY 36

WITTMAN RGNL (OSH)

⚠

⚠

Circling to Rwy 5, 23, and 31 NA at night. When local altimeter setting not received, use Fond Du Lac altimeter setting and increase all MDA 40 feet; increase S-36 Cats C/D visibility and, Circling Cat C visibility ½ mile, increase Circling Cat D visibility ¼ mile, LAUDE fix minimums increase S-36 Cats C/D visibility to RVR 5500 and Circling Cat D visibility to 2¼ mile. For inop MALSRL, when using Fond Du Lac altimeter setting, increase LAUDE fix minimums S-36 Cats C/D visibility to 1½ mile. VDP NA with Fond Du Lac altimeter setting.

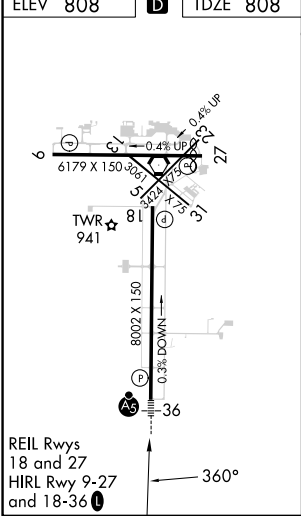
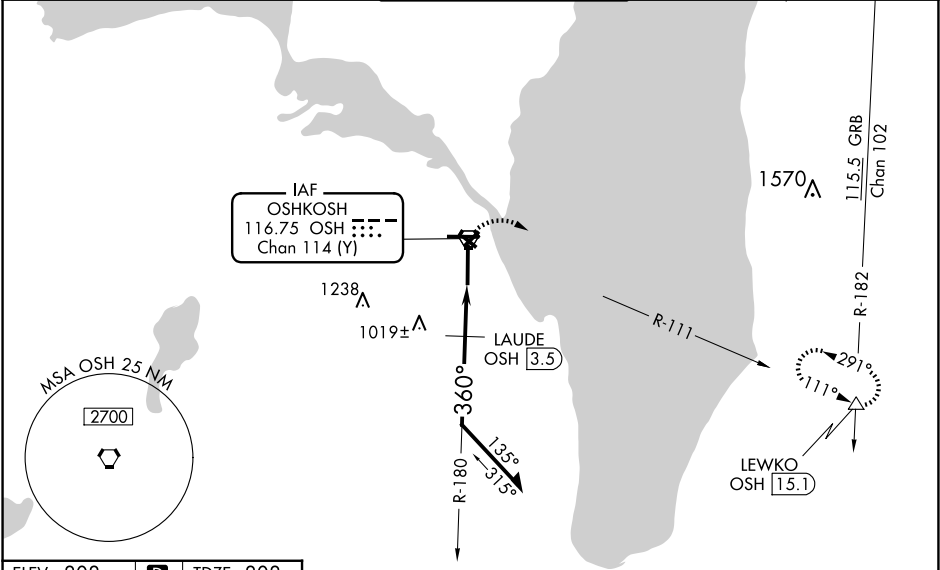
MALSRL

AS

MISSED APPROACH:

Climbing right turn to 3000 on OSH VORTAC R-111 to LEWKO INT/ OSH 15.1 DME and hold.

ATIS 125.9	MILWAUKEE APP CON 127.0 263.075	OSHKOSH TOWER ★ 118.5 (CTAF) 290.9	GND CON 132.3	UNICOM 122.95
----------------------	---	--	-------------------------	-------------------------



	3000	LEWKO	OSHKOSH VORTAC	6000	180°	2300	Remain within 10 NM
	OSHKOSH R-111			OSHKOSH 2.9	LAUDE OSH 3.5		
	*1500 when using Fond Du Lac altimeter setting.						
			2.97°	TCH 52			
			1.3 NM	0.6 NM			
CATEGORY	A	B	C	D			
S-36	1460/24	652 (700-½)	1460-1¾	652 (700-1¾)			
CIRCLING	1460-1	652 (700-1)	1460-1¾	652 (700-1¾)	1460-2		
	LAUDE FIX MINIMUMS						
S-36	1280/24	472 (500-½)	1280/50	472 (500-1)			
CIRCLING	1280-1	1300-1	1360-1½	552 (600-½)	1440-2	632 (700-2)	