

WAAS CH 93534 W27A	APP CRS 274°	Rwy Idg TDZE 786 Apt Elev 808
--	------------------------	---

RNAV (GPS) RWY 27

WITTMAN RGNL (OSH)

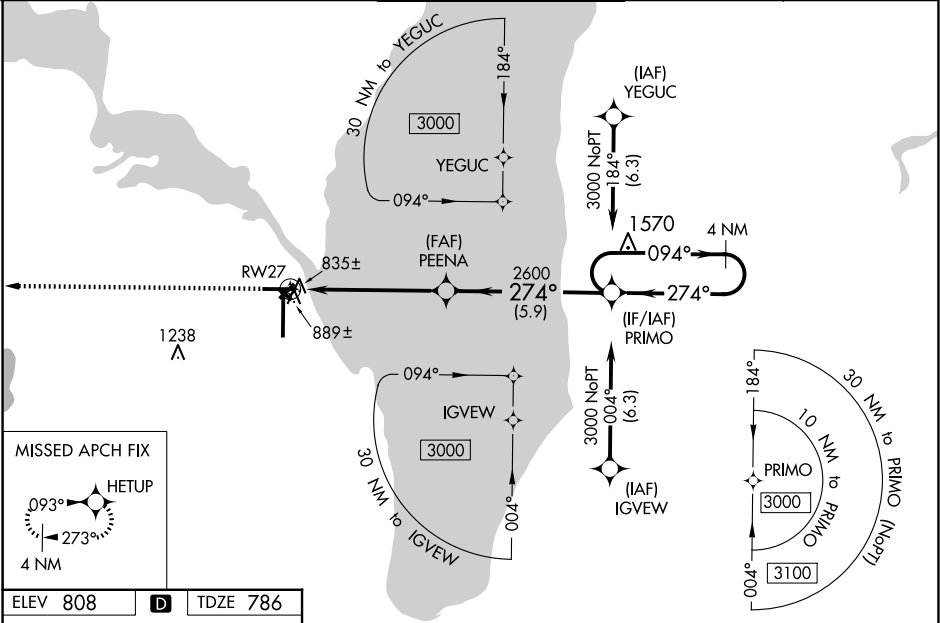
▼

▲

For uncompensated Baro-VNAV systems, LNAV/VNAV NA below -20°C (-4°F) or above 54°C (130°F). DME/DME RNP-0.3 NA. When local altimeter setting not received, use Fond Du Lac altimeter setting and increase all DA 31 feet and all MDA 40 feet; increase LPV and LNAV/VNAV all Cats visibility and LNAV Cats C and D visibility ½ mile, increase Circling Cat D ¼ mile, Baro-VNAV and VDP NA with Fond Du Lac altimeter setting. Circling to Rwy 5, 23, and 31 NA at night. Helicopter visibility reduction below ¾ SM NA.

MISSED APPROACH:
Climb to 3000 direct HETUP and hold.

ATIS 125.9	MILWAUKEE APP CON 127.0 263.075	OSHKOSH TOWER ★ 118.5 (CTAF) 0 290.9	GND CON 132.3	UNICOM 122.95
----------------------	---	--	-------------------------	-------------------------



ELEV 808	D	TDZE 786
-----------------	----------	-----------------

3000

HETUP

*LNAV only.

1 NM to RWY 27

4.6 NM

5.9 NM

PRIMO

4 NM Holding Pattern

PEENA

2600

RWY 27

2600

GP 3.00°

TCH 47

CATEGORY	A	B	C	D
LPV DA		1036-¾	250 (300-¾)	
LNAV/VNAV DA		1078-1	292 (300-1)	
LNAV MDA		1140-1	354 (400-1)	
C CIRCLING	1280-1 472 (500-1)	1300-1 492 (500-1)	1360-1½ 552 (600-1½)	1440-2 632 (700-2)