

LOM OS
395


APP CRS
003°

Rwy Idg
TDZE
Apt Elev
8002
808
808

▼
▲ NA

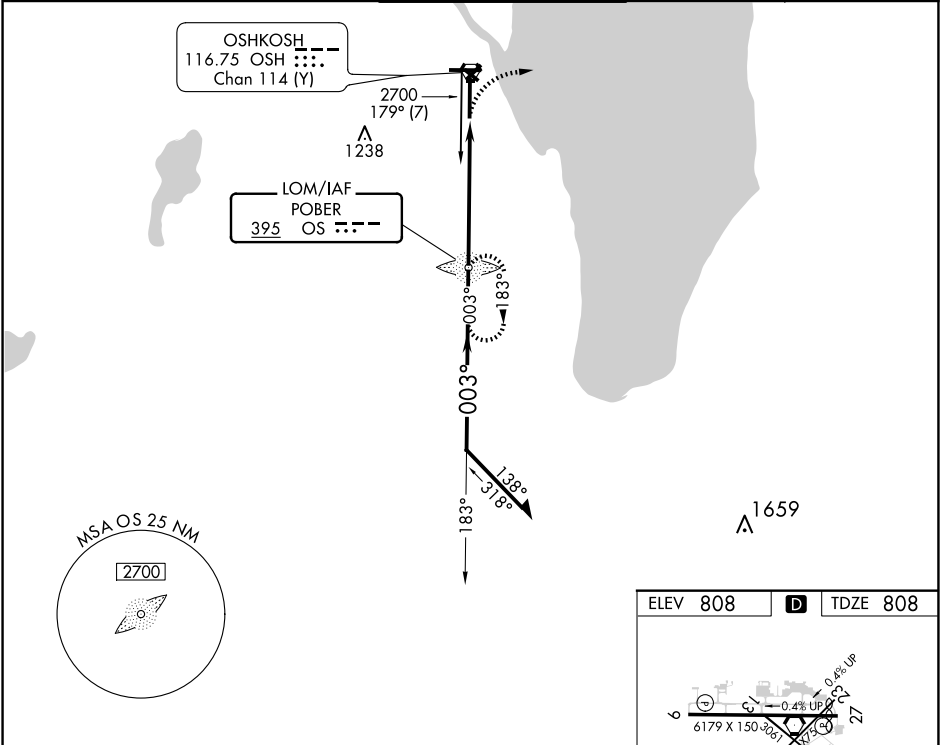
When local altimeter setting not received, use Fond Du Lac altimeter setting and increase all MDA 40 feet; increase S-36 Cat C/D and Circling Cat C visibilities ½ mile; increase Circling Cat D visibility ¼ mile. For inop MALSR, increase S-36 Cat D visibility to 1½ mile. For inop MALSR when using Fond Du Lac altimeter setting, increase S-36 Cat D visibility to 2 miles. Circling to Rwy 5, 23, and 31 NA at night.

MALSR

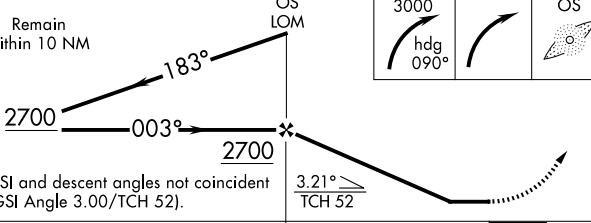


MISSED APPROACH:
Climbing right turn to 3000 on heading 090° then right turn direct POBER LOM and hold.

ATIS 125.9	MILWAUKEE APP CON 127.0 263.075	OSHKOSH TOWER ★ 118.5 (CTAF) 0 290.9	GND CON 132.3	UNICOM 122.95
----------------------	---	--	-------------------------	-------------------------



Remain within 10 NM



3000

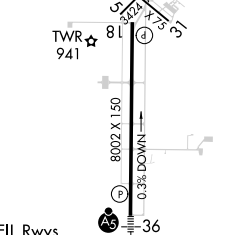
hdg 090°

OS

ELEV 808

D

TDZE 808



REIL Rwy 18 and 27

HIRL Rwy 9-27 and 18-36

FAF to MAP 5.4 NM

CATEGORY	A	B	C	D
S-36	1460/40	652 (700-¾)	1460-1 ⅜	652 (700-1 ⅜)
CIRCLING	1460-1	652 (700-1)	1460-1 ⅞	1460-2
			652 (700-1 ⅞)	652 (700-2)

Knots	60	90	120	150	180
Min:Sec	5:24	3:36	2:42	2:10	1:48

EC-3, 07 AUG 2025 to 04 SEP 2025

EC-3, 07 AUG 2025 to 04 SEP 2025