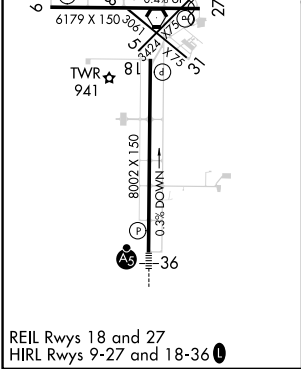
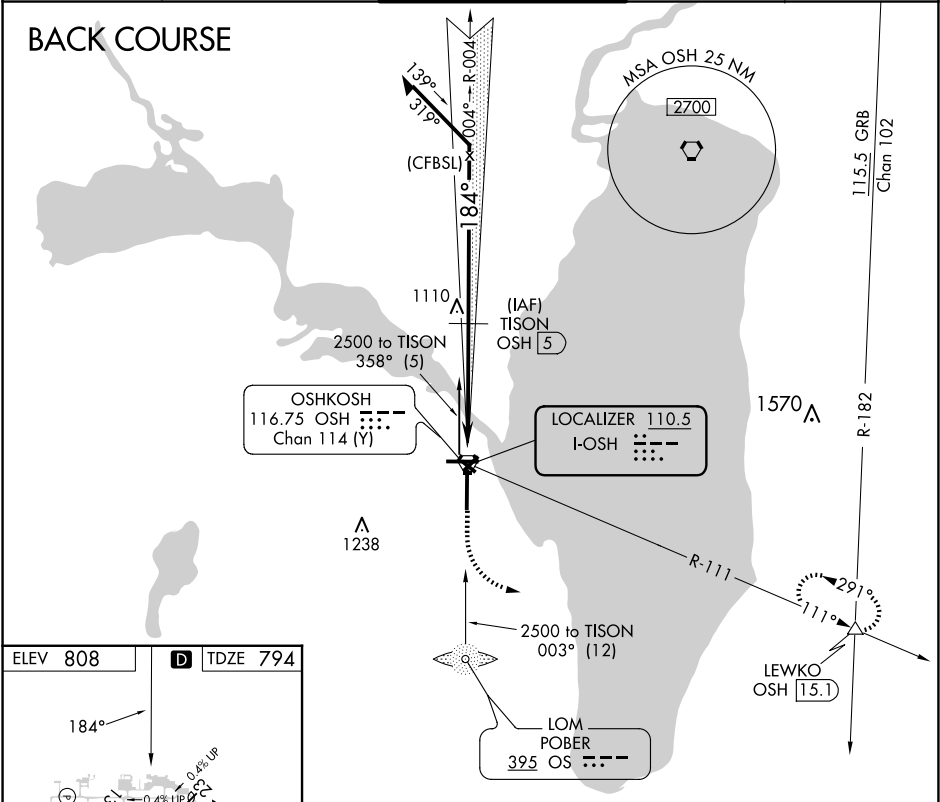


LOC I-OSH 110.5	APP CRS 184°	Rwy Idg TDZE Apt Elev	8002 794 808
---------------------------	------------------------	-----------------------------	---

LOC/DME BC RWY 18
WITTMAN RGNL (OSH)

<p>⚠ Simultaneous reception of I-OSH and OSH DME required. DME from OSH VORTAC. When local altimeter setting not received, use Fond Du Lac altimeter setting and increase all MDA 40 feet; increase Circling Cat D visibility ¼ mile. Circling to Rwy 5, 23, and 31 NA at night. Helicopter visibility reduction below ¾ SM NA.</p>	<p>⚠ MISSED APPROACH: Climb to 1300 then climbing left turn to 3000 on OSH R-111 to LEWKO INT/OSH 15.1 DME and hold.</p>
---	--

ATIS 125.9	MILWAUKEE APP CON 127.0 263.075	OSHKOSH TOWER ★ 118.5 (CTAF) 290.9	GND CON 132.3	UNICOM 122.95
----------------------	---	--	-------------------------	-------------------------



1300	3000	LEWKO	TISON	Remain within 10 NM
OSH R-111	OSH [0.3]	OSH VORTAC	OSH [5]	
0.6 NM	4.7 NM			
CATEGORY	A	B	C	D
S-18	1240-1	446 (500-1)	1240-1 3/8	446 (500-1 3/8)
CIRCLING	1280-1	1300-1	1360-1 1/2	1440-2
	472 (500-1)	492 (500-1)	552 (600-1 1/2)	632 (700-2)