

WAAS CH <b>78003</b> <b>W35A</b>	APP CRS <b>353°</b>	Rwy Idg TDZE <b>1179</b> Apt Elev <b>234</b>
--	------------------------	--

RNAV (GPS) RWY 35

PLATTSBURGH INTL (PBG)

▼

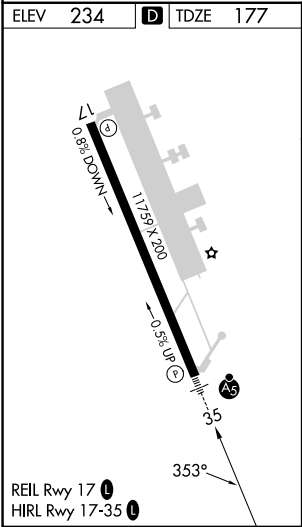
▲

For uncompensated Baro-VNAV systems, LNAV/VNAV NA below -18°C (0°F) or above 54°C (130°F). DME/DME RNP-0.3 NA. For inop MALSR, increase LPV and LNAV/VNAV all Cats visibility to ¾ mile. For inop MALSR when using Burlington altimeter setting, increase LPV and LNAV/VNAV all Cats visibility to 1 mile. When local altimeter setting not received, use Burlington altimeter setting and increase all DA 54 feet and all MDA 60 feet; increase LPV and LNAV/VNAV all Cats visibility to ¾ mile, LNAV Cats C, D visibility to 1¼ mile, and increase Circling Cats C/D visibility ¼ mile. VDP and Baro-VNAV NA when using Burlington Intl altimeter setting.

MALSR

MISSED APPROACH: Climb to 3500 direct OTGOE and hold, continue climb-in-hold to 3500.

ASOS <b>132.225</b>	BURLINGTON APP CON ★ <b>121.1 278.8</b>	CLNC DEL <b>121.85</b>	UNICOM <b>122.7 (CTAF) 0</b>
------------------------	--	---------------------------	---------------------------------



Procedure NA for arrivals on BTW VORTAC airway radials 311 CW 014.

Procedure NA for arrivals at LEAFY on V489 southbound.

3500

OTGOE

\* LNAV only

4 NM Holding Pattern

GP 3.00° TCH 55

CATEGORY	A	B	C	D
LPV DA	427-½ 250 (200-½)			
LNAV/VNAV DA	434-½ 257 (200-½)			
LNAV MDA	700-½ 523 (500-½)	700-1 523 (500-1)		
CIRCLING	720-1 486 (600-1)	740-1 506 (600-1)	800-1½ 566 (700-1½)	960-2¼ 726 (800-2¼)