

WAAS CH 42630 W16A	APP CRS 167°	Rwy Idg TDZE 1252 Apt Elev 1252	6005
--	------------------------	---	-------------

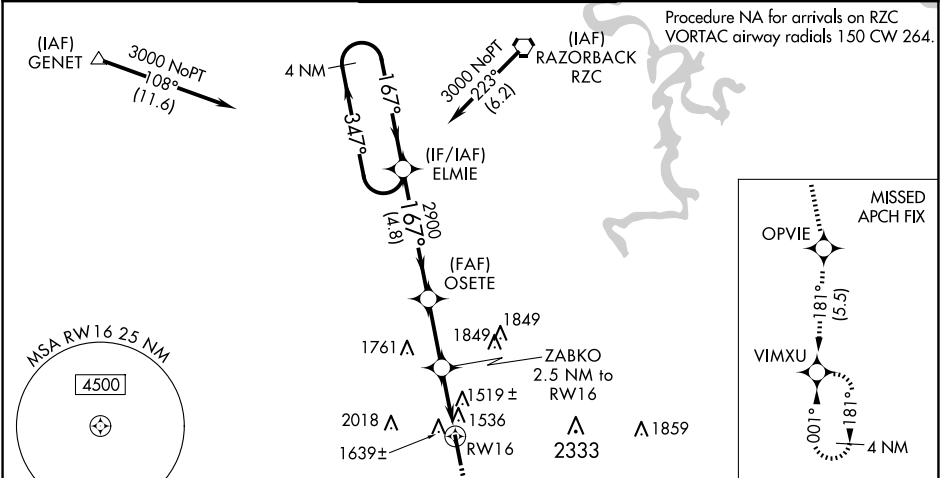
RNAV (GPS) RWY 16
DRAKE FLD (F'YV)

⚠ Baro-VNAV NA when using Springdale altimeter setting. For uncompensated Baro-VNAV systems, LNAV/VNAV NA below -17°C (2°F) or above 54°C (130°F). When VGSI inop, Straight-in/Circling Rwy 16 procedure NA at night. Circling NA east of Rwy 16-34. DME/DME RNP-0.3 NA. Visibility reduction by helicopters NA. When local altimeter setting not received, use Springdale altimeter setting and increase all DA and MDA 40 feet. Increase LPV all Cats visibility and LNAV Cats C and D visibility ½ mile and LNAV/VNAV all Cats visibility ⅓ mile. For inop ODALS, increase LPV all Cats visibility ⅓ mile, LNAV/VNAV all Cats visibility ⅓ mile and LNAV Cats C and D visibility ¼ mile. For inop ODALS, when using Springdale altimeter setting, increase LPV all Cats visibility to 1½ miles and LNAV Cats C and D visibility to 2 miles. Inop table does not apply when using Springdale altimeter setting to LNAV/VNAV all Cats and LNAV Cats A and B.

ODALS

MISSED APPROACH:
Climb to 4000 direct OPVIE and on track 181° to VIMXU and hold.

ATIS 119.575	RAZORBACK APP CON★ 121.0 244.575	DRAKE TOWER★ 128.0 (CTAF) 371.9	GND CON 121.8	UNICOM 122.95
------------------------	--	---	-------------------------	-------------------------



4 NM Holding Pattern

ELMIE

3000 ← 347° / 167° →

GP 3.00° TCH 50

OSETE 2900

ZABKO 2.5 NM to RW16

*2080

RW16

4.8 NM | 2.5 NM | 2.5 NM

ELEV 1252 **D** **TDZE 1252**

167°

91

TWR 1339

1337

6005 X 100

34

CATEGORY	A	B	C	D
LPV DA		1714-1¾	462 (500-1¾)	
LNAV/VNAV DA		1856-1⅞	604 (700-1⅞)	
LNAV MDA	1900-1	648 (700-1)	1900-1¾	648 (700-1¾)
C CIRCLING	2000-1	748 (800-1)	2320-3 1068 (1100-3)	2340-3 1088 (1100-3)

MIRL Rwy 16-34

SC-1, 07 AUG 2025 to 04 SEP 2025

SC-1, 07 AUG 2025 to 04 SEP 2025