

WAAS
CH **69242**
W36A

APP CRS
356°

Rwy Idg
TDZE
Apt Elev

5150
704
720

RNAV (GPS) RWY 36

OKMULGEE RGNL/PAUL AND BETTY ABBOTT FLD (OKM)

RNP APCH-GPS.

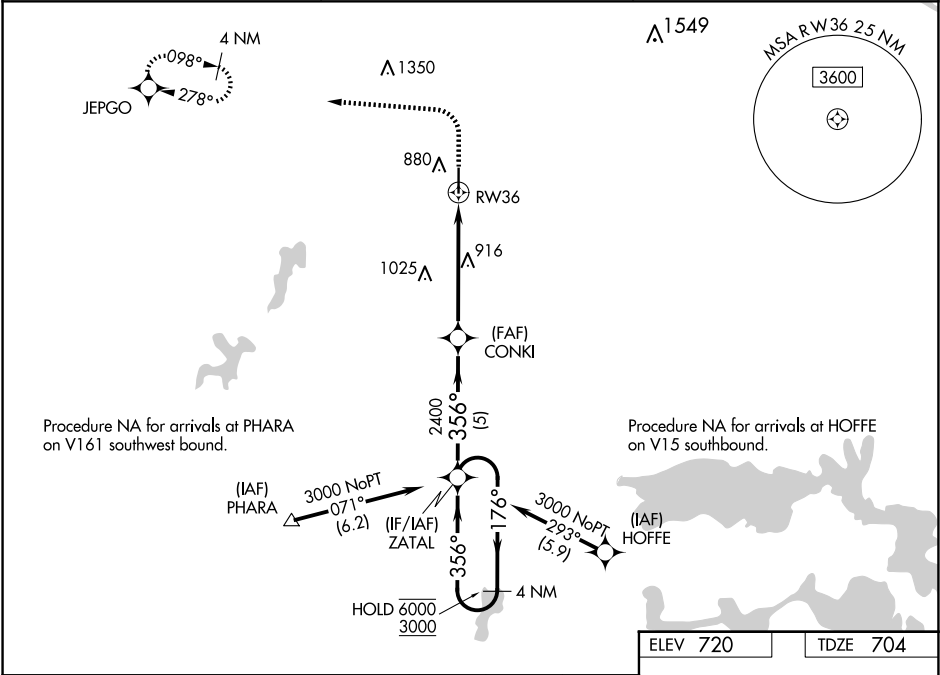
▼

▲

For uncompensated Baro-VNAV systems,
LNAV/VNAV NA below -24°C or above 45°C.

MISSED APPROACH: Climb to 1200, then climbing left turn to 3000 direct JEPGO and hold.

| | | |
|----------------------------|--------------------------------------|---------------------------------|
| AWOS-3PT 118.225 | TULSA APP CON 119.85 338.3 | UNICOM 123.0 (CTAF) 0 |
|----------------------------|--------------------------------------|---------------------------------|



VGSI and RNAV glidepath not coincident (VGSI Angle 3.00/TCH 40).

4 NM Holding Pattern

ZATAL

6000

3000

176°

356°

GP 3.00° TCH 50

CONKI

2400

356°

2400

5 NM

3.8 NM

1.4 NM

RW36

*LNAV only.

1200

3000

JEPGO

81

5150 X 101

759

36

0.7% UP

356°

MIRL Rwy 18-36 0

| CATEGORY | A | B | C | D |
|--------------|-----------------------|-----------------------|-------------------------|------------------------|
| LPV DA | | 904-¾ | 200 (200-¾) | |
| LNAV/VNAV DA | | 991-⅞ | 287 (300-⅞) | |
| LNAV MDA | 1180-1 | 476 (500-1) | 1180-1⅓ | 476 (500-1⅓) |
| CIRCLING | 1240-1 520 (600-1) | 1340-1 620 (700-1) | 1340-1¾ 620 (700-1¾) | 1640-3 920 (1000-3) |