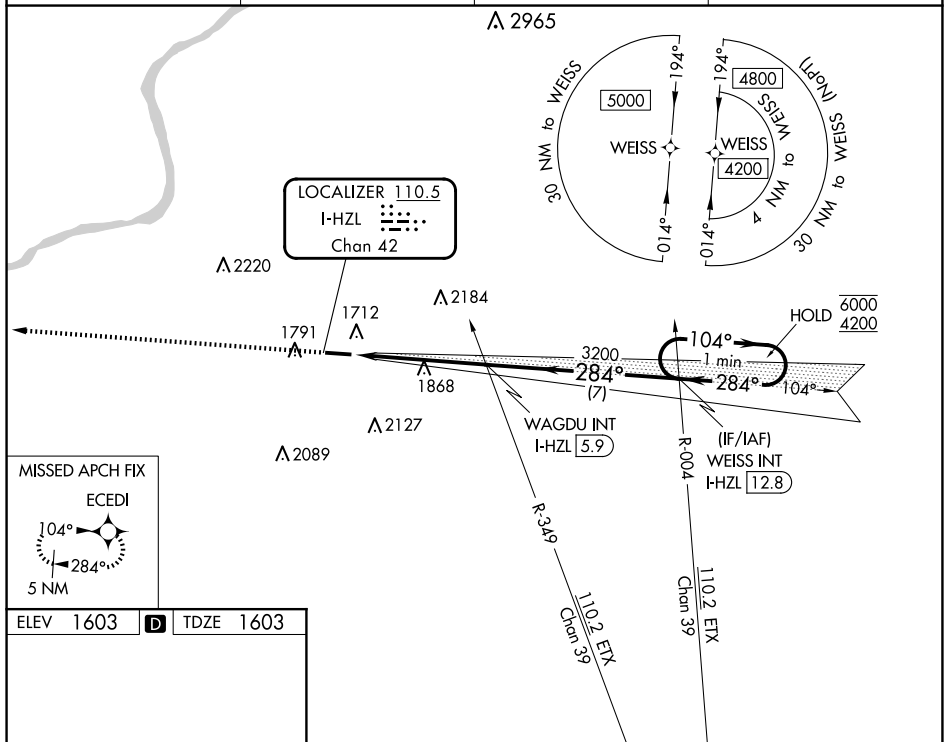


LOC RWY 28
HAZLETON RGNL (HZZ)

MISSED APPROACH:
Climb to 4400 direct
ECEDI and hold.

T
A NA Rwy 28 helicopter visibility reduction below $\frac{3}{4}$ SM NA. Inop table does not apply to Cats A/B. For inop ALS, increase Cat C/D visibility to $1\frac{1}{8}$ SM.

UNICOM
123.0 (CTAF)



MISSED APCH FIX

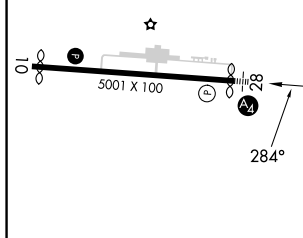
ECEDI


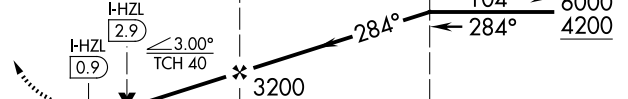
104°

284°

5 NM

ELEV 1603	D	TDZE 1603
-----------	----------	-----------



<div style="display: flex; justify-content: space-around; align-items: center;"> <div style="text-align: center;"> <p>4400</p> <p>↑</p> </div> <div style="text-align: center;"> <p>ECEDI</p>  </div> </div>		<p>WAGDU INT</p> <p>I-HZL 5.9</p>		<p>WEISS INT</p> <p>I-HZL 12.8</p>		<p>One Minute Holding Pattern</p>	
							
CATEGORY		A		B		C	
S-LOC 28		2280-1 677 (700-1)		2280-1¾ 677 (700-1¾)			
CIRCLING		2280-1 677 (700-1)		2400-1 797 (800-1)		2480-2½ 877 (900-2½)	
						2520-3 917 (1000-3)	

NE-4, 07 AUG 2025 to 04 SEP 2025

NE-4, 07 AUG 2025 to 04 SEP 2025