

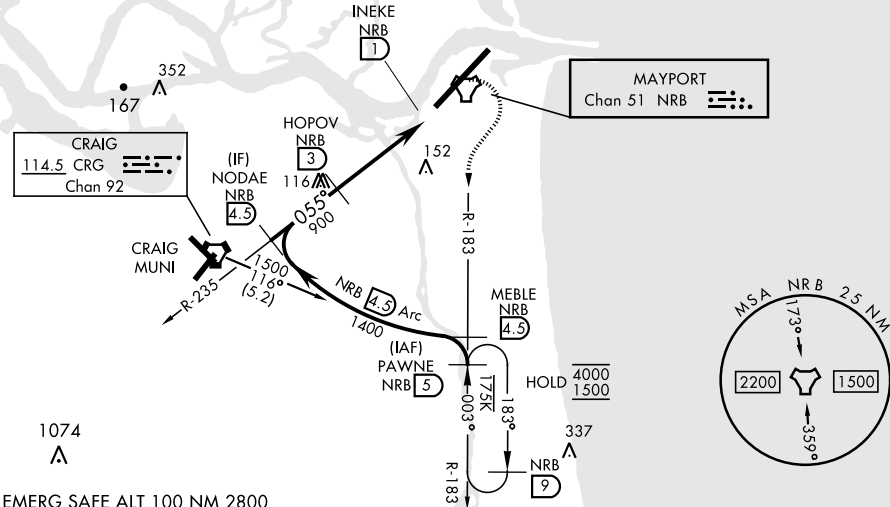
COPTER TACAN Z RWY 5

TACAN NRB Chan 51	APCH CRS 055°	Rwy Idg 8001 TDZE 12 Arpt Elev 15	[USN]	MAYPORT NS (ADM DAVID L. MC DONALD FLD) (KNRB)	
<div>▼</div>				MISSED APPROACH: Climb to 500. Then climbing right turn to 1500 via NRB TACAN R-183 to PAWNE and hold.	
ATIS ★ 236.775	JACKSONVILLE APP CON 124.9 308.4		TOWER ★ 118.75 239.30		GND CON 126.5 233.7
ASR/PAR					

CAUTION: When Rwy 23 VGSI inop, Circling to Rwy 23 NA at night.

Max airspeed 90 KIAS

Final approach course is 317° from rwy centerline at 3000' from threshold.



EMERG SAFE ALT 100 NM 2800				ELEV 15		TDZE 12
CATEGORY	COPTER					
S-5	440-½	428	(500-½)			
CIRCLING	560-1	545	(600-1)			
				REIL Rwy 5-23 HIRL Rwy 5-23		

COPTER TACAN Z RWY 5

SE-3, 07 AUG 2025 to 04 SEP 2025

SE-3, 07 AUG 2025 to 04 SEP 2025