

COPTER TACAN Z RWY 23

TACAN NRB Chan 51	APCH CRS 221°	Rwy Idg 8001 TDZE 15 Arpt Elev 15
-----------------------------	-------------------------	--

[USN] MAYPORT NS (ADM DAVID L. MC DONALD FLD) (KNRB)



Visibility reduction by helicopters not authorized.

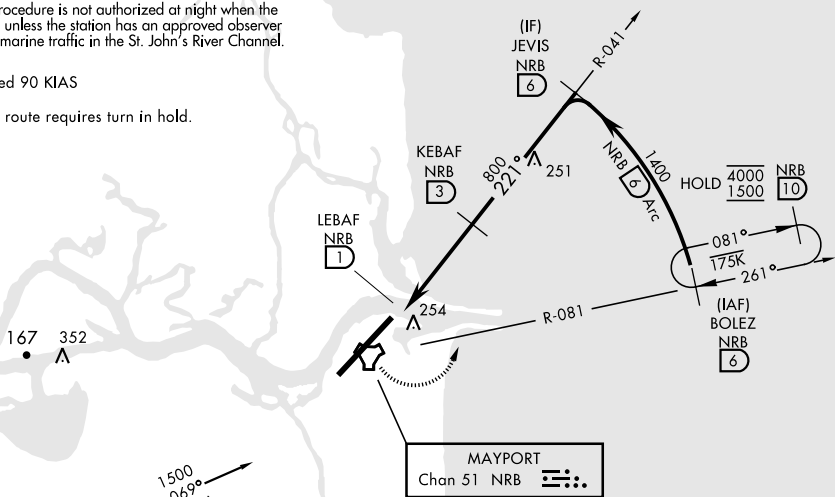
MISSED APPROACH: Climbing left turn to 1500
via NRB TACAN R-081 to BOLEZ and hold.


ATIS ★ 236.775	JACKSONVILLE APP CON 124.9 308.4	TOWER ★ 118.75 239.30	GND CON 126.5 233.7	ASR/PAR
-------------------	-------------------------------------	--------------------------	------------------------	---------

CAUTION: Procedure is not authorized at night when the VGSI is inop, unless the station has an approved observer watching for marine traffic in the St. John's River Channel.

Max airspeed 90 KIAS

CRG Feeder route requires turn in hold.

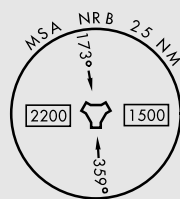
CRAIG
MUN

CRAIG
CRG 
Chan 92

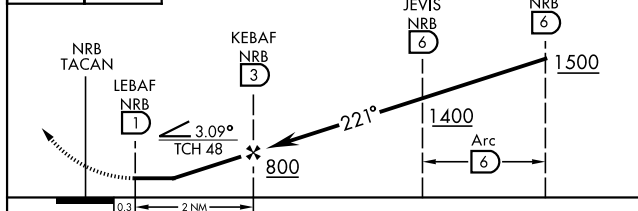
1074
A

EMERG SAFE ALT 100 NM 2800

CAUTION: Vessels with masts up to 150' transitioning the St. Johns River inside of NRB 2 DME.

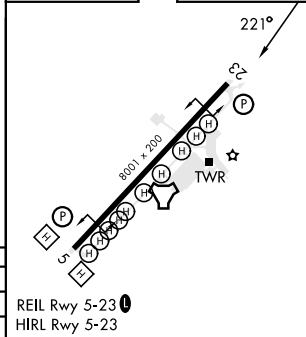


1500 NRB R-081	BOLEZ NRB 6
----------------------	-------------------



CATEGORY	COPTER		
S-23	520-1	505	(600-1)
<input checked="" type="checkbox"/> CIRCLING	560-1	545	(600-1)

ELEV	15		TDZE	15
------	----	--	------	----



MAYPORT, FLORIDA

30°23'N-81° 25'W MAYPORT NS (ADM DAVID L. MC DONALD FLD) (KNRB)

Amdt 4 05SEP24

COPTER TACAN Z RWY 23

SE-3, 07 AUG 2025 to 04 SEP 2025

SE-3, 07 AUG 2025 to 04 SEP 2025