

WAAS CH <b>86912</b> <b>W10A</b>	APP CRS <b>094°</b>	Rwy Idg TDZE <b>631</b> Apt Elev <b>649</b>
--	------------------------	---

RNAV (GPS) RWY 10

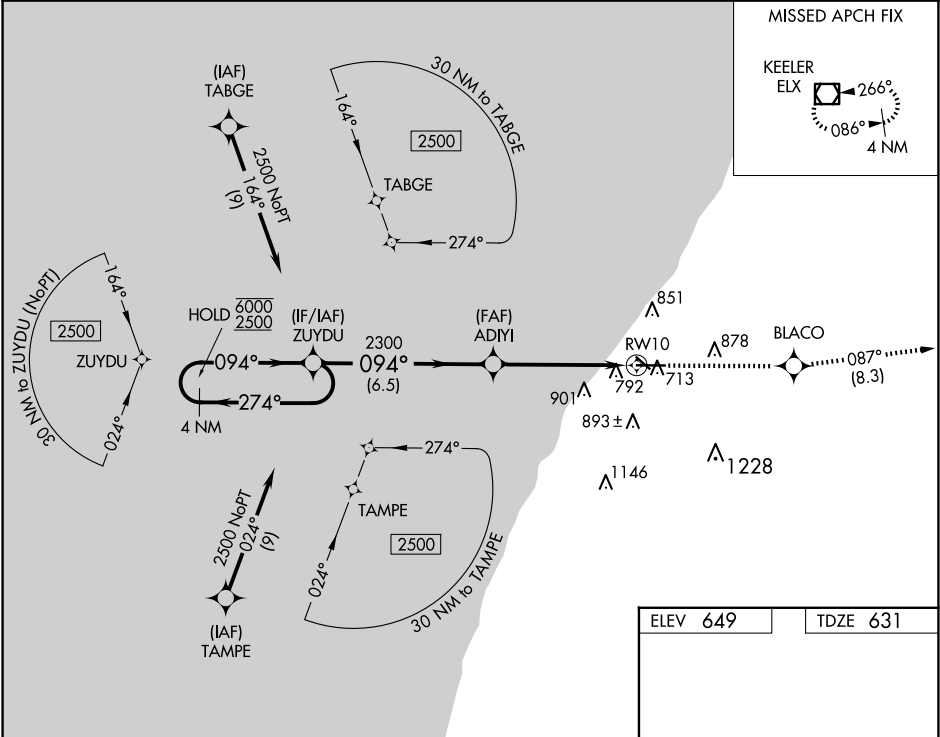
SOUTHWEST MICHIGAN RGNL (BEH)

RNP APCH.

Rwy 10 helicopter visibility reduction below ¾ SM NA.  
For uncompensated Baro-VNAV systems, LNAV/VNAV NA  
below -20°C or above 54°C.

MISSED APPROACH: Climb to 2500 direct BLACO  
and on track 087° to ELX VOR/DME and hold.

ASOS <b>121.55</b>	SOUTH BEND APP CON* <b>118.55 257.8</b>	SOUTH BEND CLNC DEL <b>119.7</b>	UNICOM <b>123.0 (CTAF)</b>
-----------------------	--	-------------------------------------	-------------------------------



4 NM Holding Pattern		ZUYDU	2500	BLACO	tr	ELX
6000 2500		274°	094°	094°	087°	
GP 3.00° TCH 35		2300	2300	2300	2300	
6.5 NM		3.7 NM	1.4 NM			
CATEGORY	A	B	C	D		
LPV DA	881-7/8		250 (300-7/8)			
LNAV/VNAV DA	1068-1½		437 (500-1½)			
LNAV MDA	1100-1 469 (500-1)		1100-1¾ 469 (500-1¾)			
REIL Rws 10, 14 and 32		MIRL Rwy 14-32		HIRL Rwy 10-28		