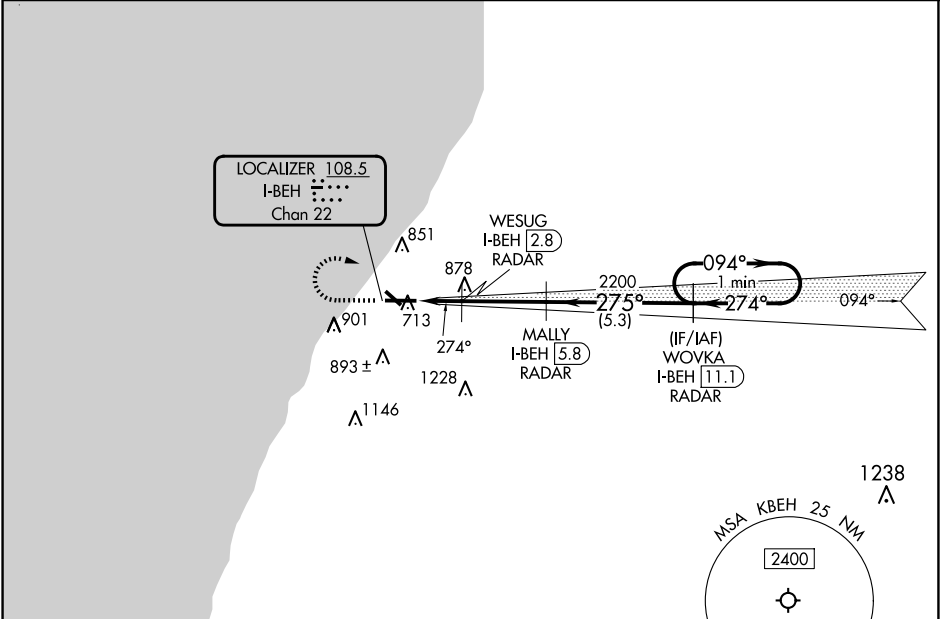


LOC I-BEH 108.5 Chan 22	APP CRS 274°	Rwy Idg TDZE Apt Elev 6006 649 649
---	------------------------	--

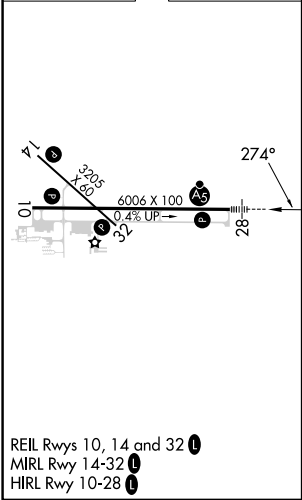
ILS or LOC RWY 28
SOUTHWEST MICHIGAN RGNL (BEH)

RNAV 1-GPS required.	MALSR	MISSED APPROACH: Climb to 1300 then climbing right turn to 3000 direct WOVKA and hold.
DME Required for LOC only.		
Circling Rwy 14 and 32 NA at night.		
For inop ALS, increase S-LOC 28 Cat C/D visibility to 1 1/8 SM.		

ASOS 121.55	SOUTH BEND APP CON * 118.55 257.8	SOUTH BEND CLNC DEL 119.7	UNICOM 123.0 (CTAF) 0
-----------------------	---	-------------------------------------	---------------------------------



ELEV 649	TDZE 649
-----------------	-----------------



1300 ↑	3000 ↗	WOVKA I-BEH 11.1 RADAR	WOVKA I-BEH 11.1 RADAR		One Minute Holding Pattern
*LOC only.					
		WESUG I-BEH 2.8 RADAR	MALLY I-BEH 5.8 RADAR		
		I-BEH 1.2 274°	I-BEH 2.3 275°	094° ← 274°	
		1.2 NM	0.5 NM	3 NM	5.3 NM
		A	B	C	D
CATEGORY					
S-ILS 28	849-½ 200 (200-½)				
S-LOC 28	1060-½ 411 (500-½)		1060-¾ 411 (500-¾)		
CIRCLING	1140-1 491 (500-1)		1160-1 511 (600-1)		1300-1¾ 651 (700-1¾)
					1340-2 691 (700-2)