

WAAS CH 82200 W18A	APP CRS 185°	Rwy Idg TDZE Apt Elev 592
--	------------------------	--

RNAV (GPS) RWY 18

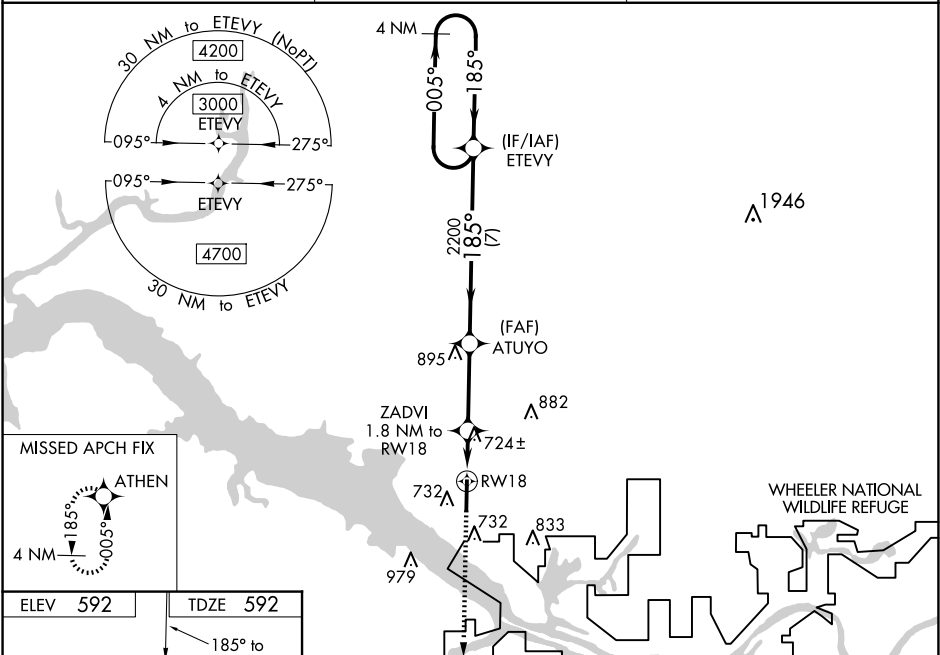
PRYOR FLD RGNL (DCU)

⚠

DME/DME RNP-0.3 NA. When local altimeter setting not received, use Huntsville Intl-Carl T Jones Fld altimeter setting: increase LPV DA to 817 and LNAV/VNAV DA to 920 and all visibilities ½ mile. Increase all MDA 40 feet and LNAV Cat C and D visibility ⅓ mile. VDP and Baro-VNAV NA when using Huntsville Intl-Carl T Jones Fld altimeter setting. For uncompensated Baro-VNAV systems, LNAV/VNAV NA below -11°C (13°F) or above 54°C (130°F).

MISSED APPROACH:
Climb to 3000 direct
ATHEN and hold.

ASOS 118.375	HUNTSVILLE APP CON* 118.05 239.0	UNICOM 123.075 (CTAF) 0
------------------------	--	-----------------------------------



ELEV 592

TDZE 592

81

636

36

HIRL Rwy 18-36 0

REIL Rwy 18 and 36 0

3000	ATHEN	ZADVI	ATUYO	ETEYV	4 NM Holding Pattern
*LNAV only		1.8 NM to RWY 18	2200		
		*1.1 NM to RWY 18			
			1180	2200	
					GP 3.00° TCH 47
CATEGORY	A	B	C	D	
LPV DA		792-¾	200 (200-¾)		
LNAV/VNAV DA		895-1	303 (400-1)		
LNAV MDA	980-1	388 (400-1)	980-1⅛	388 (400-1⅛)	
CIRCLING	1040-1 448 (500-1)	1060-1 468 (500-1)	1340-2¼ 748 (800-2¼)	1340-2½ 748 (800-2½)	