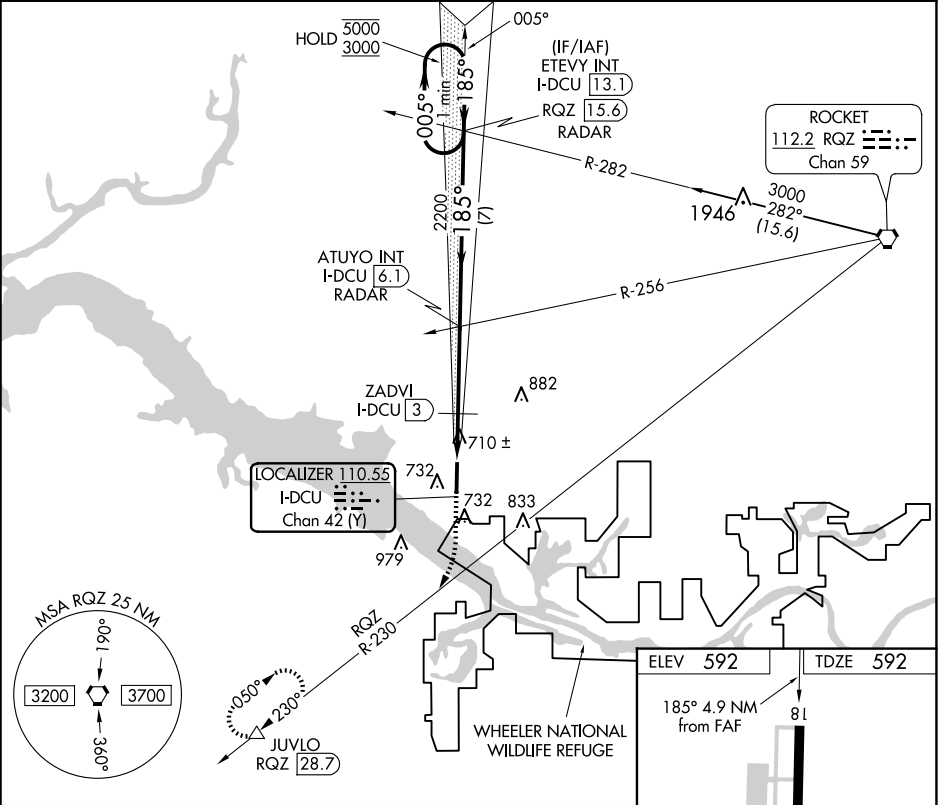


LOC/DME I-DCU 110.55 Chan 42 (Y)	APP CRS 185°	Rwy Idg 6107 TDZE 592 Apt Elev 592	ILS or LOC RWY 18 PRYOR FLD RGNL (DCU)
--	------------------------	---	---

DME required.	MISSED APPROACH: Climb to 1700, then climbing right turn to 3000 on RQZ VORTAC R-230 to JUVLO/RQZ 28.7 DME and hold.
---------------	--

ASOS 118.375	HUNTSVILLE APP CON★ 118.05 239.0	UNICOM 123.075 (CTAF) 0
------------------------	--	-----------------------------------



One Minute Holding Pattern		ETEVI INT I-DCU 13.1 RADAR	ATUYO INT I-DCU 6.1 RADAR	1700	3000	JUVLO
5000 ← 005°		2200	ZADVI I-DCU 3	I-DCU 2.3	I-DCU 1.2	△
3000 → 185°		1200	7 NM	3.1 NM	0.7 NM	1.1
GS 3.00° TCH 47						
CATEGORY	A	B	C	D		
S-ILS 18		792-¾	200 (200-¾)			
S-LOC 18	980-1	388 (400-1)	980-1⅛	388 (400-1⅛)		
✪ CIRCLING	1040-1 448 (500-1)	1060-1 468 (500-1)	1340-2¼ 748 (800-2¼)	1340-2½ 748 (800-2½)		

ELEV 592		TDZE 592
185° 4.9 NM from FAF		81
636		36
HIRL Rwy 18-36 0		REIL Rws 18 and 36 0
FAF to MAP 4.9 NM		
Knots	60	90 120 150 180
Min:Sec	4:54	3:16 2:27 1:58 1:38