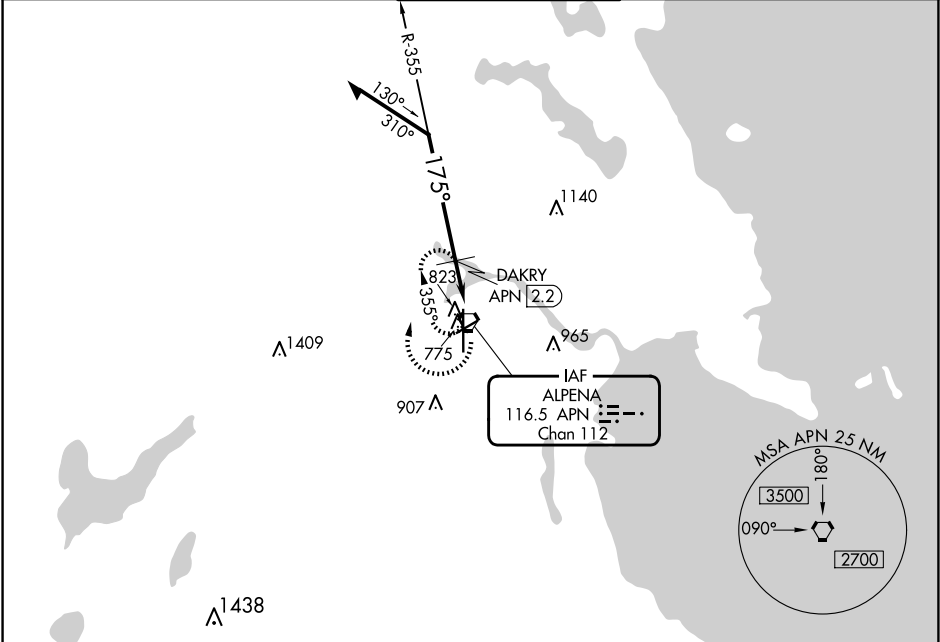


VORTAC APN 116.5 Chan 112	APP CRS 175°	Rwy Idg TDZE 683 Apt Elev 690	9001
---	------------------------	---	-------------

VOR RWY 19
ALPENA COUNTY RGNL (APN)

▽ Rwy 19 helicopter visibility reduction below ¾ SM NA.	MISSED APPROACH: Climbing right turn to 2500 in APN VORTAC holding pattern.
---	---

ATIS 120.675 327.05	ALPENA APP CON ★ 128.425 379.3	ALPENA TOWER ★ 121.35 (CTAF) 0 318.1	GND CON 121.9 275.8	UNICOM 122.95
-------------------------------	--	--	-------------------------------	-------------------------



ELEV 690					D TDZE 683	
<p>Remain within 10 NM</p> <p>APN VORTAC 2500</p> <p>355°</p> <p>175°</p> <p>2500</p> <p>DAKRY APN 2.2</p> <p>APN 1.6</p> <p>1340</p> <p>3.18°</p> <p>TCH 55</p> <p>0.6 NM</p> <p>1.2 NM</p> <p>VGSI and descent angles not coincident (VGSI Angle 3.00/TCH 39).</p>						
CATEGORY	A	B	C	D		
S-19	1340-1	657 (700-1)	1340-1 7/8	657 (700-1 7/8)		
CIRCLING	1340-1	650 (700-1)	1340-1 7/8 650 (700-1 7/8)	1340-2 650 (700-2)		
DAKRY FIX MINIMUMS						
S-19	1100-1	417 (500-1)	1100-1 1/8	417 (500-1 1/8)		
CIRCLING	1140-1	450 (500-1)	1220-1 1/2 530 (600-1 1/2)	1280-2 590 (600-2)		

TWR 768

61

175°

5028 X 100

50 X 1006

HIRL Rwy 1-19 1

MIRL Rwy 7-25 1

REIL Rwy 7, 19 and 25 1

EC-1, 07 AUG 2025 to 04 SEP 2025

EC-1, 07 AUG 2025 to 04 SEP 2025